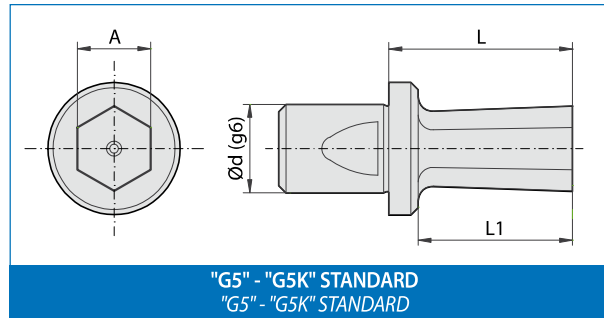


**BROCCE G5 - DIAMETRO "d" DEL GAMBO: 5 mm**  
**G5 BROACHES - 5 mm SHANK DIAMETER ("d")**

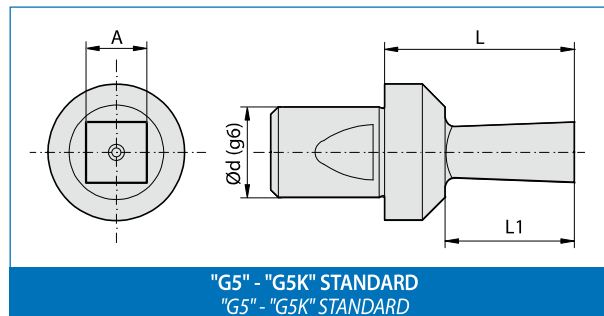
**Sezione ESAGONALE standard (E)**  
**Standard HEXAGONAL section (E)**



"G5" - "G5K" STANDARD  
 "G5" - "G5K" STANDARD

ARTICOLO (materiale) ITEM (material)		DIMENSIONI - DIMENSIONS				Utilizzo su Brocciatori/ Use on Broaching heads
HSS	SINTERIZZATO SINTERED	d	A	L1	L	
Standard	Standard					Standard BR-G5
G5-E-1	G5K-E-1	5	1 +0,04 +0,06	2	10	
G5-E-1,5	G5K-E-1,5	5	1,5 +0,05 +0,07	3	10	
G5-E-2	G5K-E-2	5	2 +0,05 +0,07	4	10	
G5-E-2,5	G5K-E-2,5	5	2,5 +0,05 +0,07	5	10	
G5-E-3	G5K-E-3	5	3 +0,06 +0,08	6	10	
G5-E-3,5	G5K-E-3,5	5	3,5 +0,06 +0,08	6	10	
G5-E-4	G5K-E-4	5	4 +0,07 +0,09	7	10	
G5-E-4,5	G5K-E-4,5	5	4,5 +0,07 +0,09	7	10	
G5-E-5	G5K-E-5	5	5 +0,08 +0,10	7,5	10	
G5-E-5,5	G5K-E-5,5	5	5,5 +0,08 +0,10	7,5	10	
G5-E-6	G5K-E-6	5	6 +0,08 +0,10	7,5	10	

**Sezione QUADRA standard (Q)**  
**Standard SQUARE section (Q)**



"G5" - "G5K" STANDARD  
 "G5" - "G5K" STANDARD

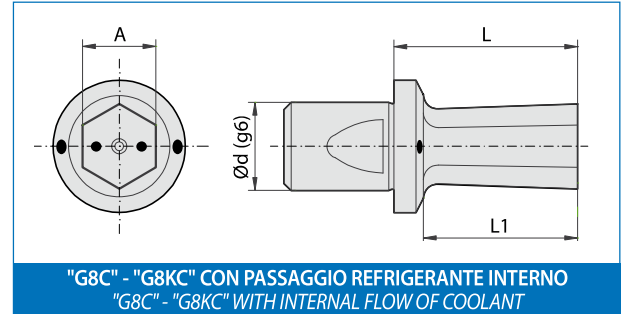
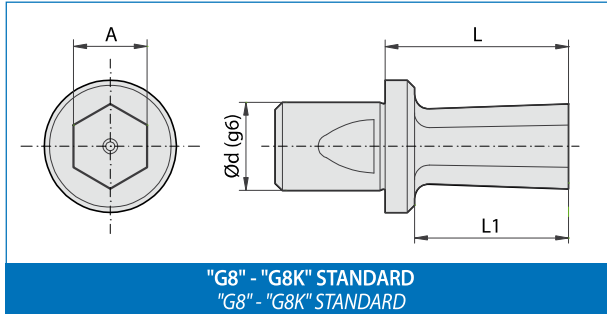
ARTICOLO (materiale) ITEM (material)		DIMENSIONI - DIMENSIONS				Utilizzo su Brocciatori/ Use on Broaching heads
HSS	SINTERIZZATO SINTERED	d	A	L1	L	
Standard	Standard					Standard BR-G5
G5-Q-1	G5K-Q-1	5	1 +0,04 +0,06	2	10	
G5-Q-1,5	G5K-Q-1,5	5	1,5 +0,05 +0,07	3	10	
G5-Q-2	G5K-Q-2	5	2 +0,05 +0,07	4	10	
G5-Q-2,5	G5K-Q-2,5	5	2,5 +0,06 +0,08	5	10	
G5-Q-3	G5K-Q-3	5	3 +0,06 +0,08	6	10	
G5-Q-3,5	G5K-Q-3,5	5	3,5 +0,07 +0,09	6	10	
G5-Q-4	G5K-Q-4	5	4 +0,07 +0,09	7	10	

In questi articoli possiamo eseguire i seguenti rivestimenti: **HDP RED, WONDER, TiN, INOX PLUS e ZIRINOS** > vedi pag.16  
 Available coatings for the up above mentioned items: **HDP RED, WONDER, TiN, INOX PLUS and ZIRINOS** > see page 16



**BROCCHE G8 E G8C - DIAMETRO "d" DEL GAMBO: 8 mm**  
**G8 AND G8C BROACHES - 8 mm SHANK DIAMETER ("d")**

**Sezione ESAGONALE (E)**  
**HEXAGONAL section (E)**



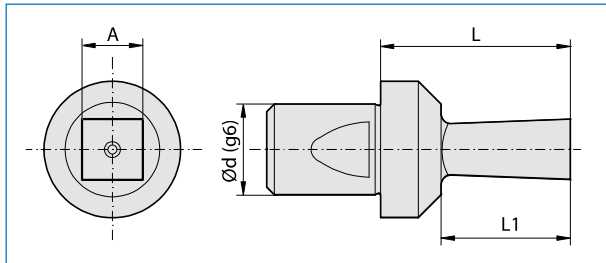
ARTICOLO (materiale) - ITEM (material)				DIMENSIONI - DIMENSIONS				Utilizzo su Brocciatori/ Use on Broaching heads
HSS		SINTERIZZATO / SINTERED		d	A	L1	L	
Standard	Ref. / Cool.	Standard	Ref. / Cool.					
G8-E-1	/	G8K-E-1	/	8	1 +0,04 +0,06	2	18	Standard BR-G8S BR-G8M BR-G8
G8-E-1,5		G8K-E-1,5		8	1,5 +0,05 +0,07	3	18	
G8-E-2	G8C-E-2	G8K-E-2	G8KC-E-2	8	2 +0,05 +0,07	5	18	
G8-E-2,5	G8C-E-2,5	G8K-E-2,5	G8KC-E-2,5	8	2,5 +0,05 +0,07	6	18	
G8-E-3	G8C-E-3	G8K-E-3	G8KC-E-3	8	3 +0,06 +0,08	7	18	
G8-E-3,5	G8C-E-3,5	G8K-E-3,5	G8KC-E-3,5	8	3,5 +0,06 +0,08	8	18	
G8-E-4	G8C-E-4	G8K-E-4	G8KC-E-4	8	4 +0,07 +0,09	9	18	
G8-E-4,5	G8C-E-4,5	G8K-E-4,5	G8KC-E-4,5	8	4,5 +0,07 +0,09	9	18	
G8-E-5	G8C-E-5	G8K-E-5	G8KC-E-5	8	5 +0,08 +0,10	11	18	
G8-E-5,5	G8C-E-5,5	G8K-E-5,5	G8KC-E-5,5	8	5,5 +0,08 +0,10	11	18	
G8-E-6	G8C-E-6	G8K-E-6	G8KC-E-6	8	6 +0,08 +0,10	13	18	
G8-E-7	G8C-E-7	G8K-E-7	G8KC-E-7	8	7 +0,08 +0,10	13	18	
G8-E-8	G8C-E-8	G8K-E-8	G8KC-E-8	8	8 +0,08 +0,10	13	18	
G8-E-9	G8C-E-9	G8K-E-9	G8KC-E-9	8	9 +0,09 +0,11	13	18	
G8-E-10	G8C-E-10	G8K-E-10	G8KC-E-10	8	10 +0,10 +0,12	13	18	

In questi articoli possiamo eseguire i seguenti rivestimenti: **HDP RED, WONDER, TiN, INOX PLUS e ZIRINOS** > vedi pag.16  
 Available coatings for the up above mentioned items: **HDP RED, WONDER, TiN, INOX PLUS and ZIRINOS** > see page 16

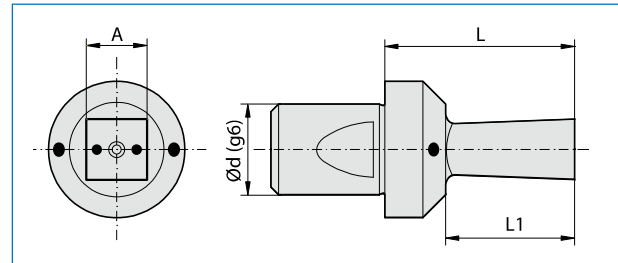


## BROCCHE G8 E G8C - DIAMETRO "d" DEL GAMBO: 8 mm G8 AND G8C BROACHES - 8 mm SHANK DIAMETER ("d")

### Sezione QUADRA (Q) SQUARE section (Q)



**"G8" - "G8K" STANDARD**  
"G8" - "G8K" STANDARD



**"G8C" - "G8KC" CON PASSAGGIO REFRIGERANTE INTERNO**  
"G8C" - "G8KC" WITH INTERNAL FLOW OF COOLANT

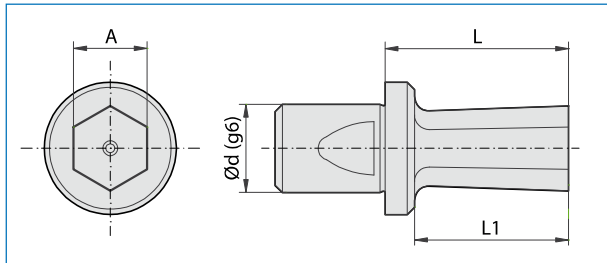
ARTICOLO (materiale) - ITEM (material)				DIMENSIONI - DIMENSIONS				Utilizzo su Broccatori/ Use on Broaching heads
HSS		SINTERIZZATO / SINTERED		d	A	L1	L	
Standard	Ref. / Cool.	Standard	Ref. / Cool.					
G8-Q-1	/	G8K-Q-1	/	8	1 +0,04 +0,06	2	18	Standard BR-G8S BR-G8M BR-G8
G8-Q-1,5		G8K-Q-1,5		8	1,5 +0,05 +0,07	3	18	
G8-Q-2	G8C-Q-2	G8K-Q-2	G8KC-Q-2	8	2 +0,05 +0,07	5	18	
G8-Q-2,5	G8C-Q-2,5	G8K-Q-2,5	G8KC-Q-2,5	8	2,5 +0,06 +0,08	6	18	
G8-Q-3	G8C-Q-3	G8K-Q-3	G8KC-Q-3	8	3 +0,06 +0,08	7	18	
G8-Q-3,5	G8C-Q-3,5	G8K-Q-3,5	G8KC-Q-3,5	8	3,5 +0,07 +0,09	8	18	
G8-Q-4	G8C-Q-4	G8K-Q-4	G8KC-Q-4	8	4 +0,07 +0,09	9	18	
G8-Q-4,5	G8C-Q-4,5	G8K-Q-4,5	G8KC-Q-4,5	8	4,5 +0,07 +0,09	9	18	
G8-Q-5	G8C-Q-5	G8K-Q-5	G8KC-Q-5	8	5 +0,08 +0,10	11	18	Refrig. / Cool. BRC-G8
G8-Q-5,5	G8C-Q-5,5	G8K-Q-5,5	G8KC-Q-5,5	8	5,5 +0,08 +0,10	11	18	
G8-Q-6	G8C-Q-6	G8K-Q-6	G8KC-Q-6	8	6 +0,08 +0,10	13	18	
G8-Q-7	G8C-Q-7	G8K-Q-7	G8KC-Q-7	8	7 +0,08 +0,10	13	18	
G8-Q-8	G8C-Q-8	G8K-Q-8	G8KC-Q-8	8	8 +0,08 +0,10	13	18	

In questi articoli possiamo eseguire i seguenti rivestimenti: **HDP RED, WONDER, TiN, INOX PLUS e ZIRINOS** > vedi pag.16  
Available coatings for the up above mentioned items: **HDP RED, WONDER, TiN, INOX PLUS and ZIRINOS** > see page 16

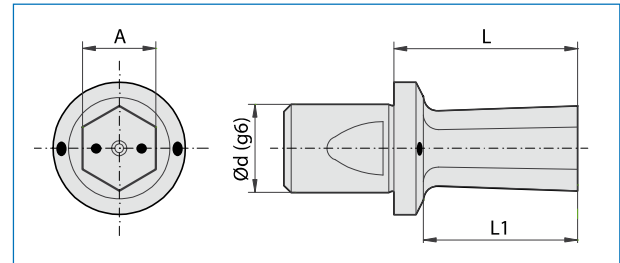


**BROCCHE G12 E G12C - DIAMETRO "d" DEL GAMBO: 12 mm**  
**G12 AND G12C BROACHES - 12 mm SHANK DIAMETER ("d")**

**Sezione ESAGONALE (E)**  
**HEXAGONAL section (E)**



"G12" - "G12K" STANDARD  
 "G12" - "G12K" STANDARD



"G12C" - "G12KC" CON PASSAGGIO REFRIGERANTE INTERNO  
 "G12C" - "G12KC" WITH INTERNAL FLOW OF COOLANT

ARTICOLO (materiale) - ITEM (material)				DIMENSIONI - DIMENSIONS				Utilizzo su Broccatori/ Use on Broaching heads
HSS		SINTERIZZATO / SINTERED		d	A	L1	L	
Standard	Ref. / Cool.	Standard	Ref. / Cool.					
G12-E-1	/	G12K-E-1	/	12	1 +0,04 +0,06	2	25	Standard BR-G12B BR-G12
G12-E-1,5		G12K-E-1,5		12	1,5 +0,05 +0,07	3	25	
G12-E-2	G12C-E-2	G12K-E-2	G12KC-E-2	12	2 +0,05 +0,07	5	25	
G12-E-2,5	G12C-E-2,5	G12K-E-2,5	G12KC-E-2,5	12	2,5 +0,05 +0,07	6	25	
G12-E-3	G12C-E-3	G12K-E-3	G12KC-E-3	12	3 +0,06 +0,08	7	25	
G12-E-3,5	G12C-E-3,5	G12K-E-3,5	G12KC-E-3,5	12	3,5 +0,06 +0,08	8	25	
G12-E-4	G12C-E-4	G12K-E-4	G12KC-E-4	12	4 +0,07 +0,09	9	25	
G12-E-4,5	G12C-E-4,5	G12K-E-4,5	G12KC-E-4,5	12	4,5 +0,07 +0,09	9	25	
G12-E-5	G12C-E-5	G12K-E-5	G12KC-E-5	12	5 +0,08 +0,10	11	25	
G12-E-5,5	G12C-E-5,5	G12K-E-5,5	G12KC-E-5,5	12	5,5 +0,08 +0,10	11	25	
G12-E-6	G12C-E-6	G12K-E-6	G12KC-E-6	12	6 +0,08 +0,10	13	25	
G12-E-7	G12C-E-7	G12K-E-7	G12KC-E-7	12	7 +0,08 +0,10	15	25	
G12-E-8	G12C-E-8	G12K-E-8	G12KC-E-8	12	8 +0,08 +0,10	17	25	
G12-E-9	G12C-E-9	G12K-E-9	G12KC-E-9	12	9 +0,09 +0,11	19	25	
G12-E-10	G12C-E-10	G12K-E-10	G12KC-E-10	12	10 +0,10 +0,12	21	25	
G12-E-11	G12C-E-11	G12K-E-11	G12KC-E-11	12	11 +0,10 +0,12	21	25	
G12-E-12	G12C-E-12	G12K-E-12	G12KC-E-12	12	12 +0,11 +0,13	21	25	
G12-E-13	G12C-E-13	G12K-E-13	G12KC-E-13	12	13 +0,11 +0,13	21	25	
G12-E-14	G12C-E-14	G12K-E-14	G12KC-E-14	12	14 +0,12 +0,14	21	25	
G12-E-15	G12C-E-15	G12K-E-15	G12KC-E-15	12	15 +0,13 +0,15	21	25	

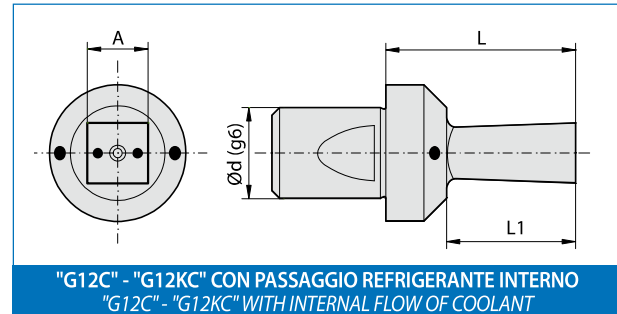
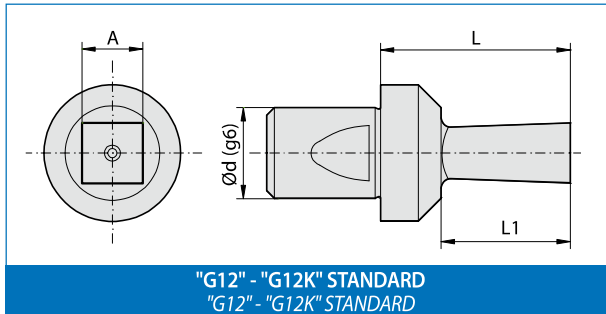
In questi articoli possiamo eseguire i seguenti rivestimenti: **HDP RED, WONDER, TiN, INOX PLUS e ZIRINOS** > vedi pag.16  
 Available coatings for the up above mentioned items: **HDP RED, WONDER, TiN, INOX PLUS and ZIRINOS** > see page 16



## BROCCHE G12 E G12C - DIAMETRO "d" DEL GAMBO: 12 mm

G12 AND G12C BROACHES - 12 mm SHANK DIAMETER ("d")

### Sezione QUADRA (Q) SQUARE section (Q)



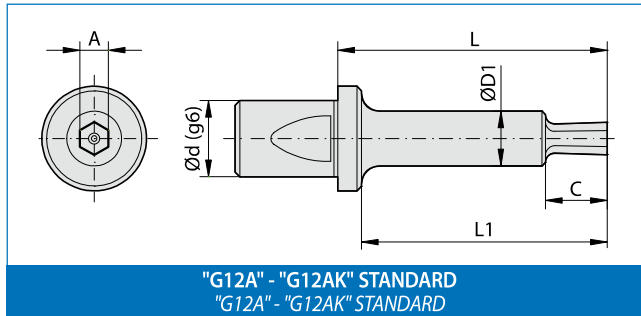
ARTICOLO (materiale) - ITEM (material)				DIMENSIONI - DIMENSIONS				Utilizzo su Broccatori/ Use on Broaching heads	
HSS		SINTERIZZATO / SINTERED		d	A	L1	L		
Standard	Ref. / Cool.	Standard	Ref. / Cool.						
G12-Q-1	/	G12K-Q-1	/	12	1	+0,04 +0,06	2	Standard BR-G12B BR-G12	
G12-Q-1,5		G12K-Q-1,5		12	1,5	+0,05 +0,07	3		
G12-Q-2	G12C-Q-2	G12K-Q-2	G12KC-Q-2	12	2	+0,05 +0,07	5		
G12-Q-2,5	G12C-Q-2,5	G12K-Q-2,5	G12KC-Q-2,5	12	2,5	+0,05 +0,07	6		
G12-Q-3	G12C-Q-3	G12K-Q-3	G12KC-Q-3	12	3	+0,06 +0,08	7		
G12-Q-3,5	G12C-Q-3,5	G12K-Q-3,5	G12KC-Q-3,5	12	3,5	+0,06 +0,08	8		
G12-Q-4	G12C-Q-4	G12K-Q-4	G12KC-Q-4	12	4	+0,07 +0,09	9		
G12-Q-4,5	G12C-Q-4,5	G12K-Q-4,5	G12KC-Q-4,5	12	4,5	+0,07 +0,09	9		
G12-Q-5	G12C-Q-5	G12K-Q-5	G12KC-Q-5	12	5	+0,08 +0,10	11		Refrig. / Cool. BRC-G12B BRC-G12
G12-Q-5,5	G12C-Q-5,5	G12K-Q-5,5	G12KC-Q-5,5	12	5,5	+0,08 +0,10	11		
G12-Q-6	G12C-Q-6	G12K-Q-6	G12KC-Q-6	12	6	+0,08 +0,10	13		
G12-Q-7	G12C-Q-7	G12K-Q-7	G12KC-Q-7	12	7	+0,08 +0,10	15		
G12-Q-8	G12C-Q-8	G12K-Q-8	G12KC-Q-8	12	8	+0,08 +0,10	17		
G12-Q-9	G12C-Q-9	G12K-Q-9	G12KC-Q-9	12	9	+0,09 +0,11	19		
G12-Q-10	G12C-Q-10	G12K-Q-10	G12KC-Q-10	12	10	+0,10 +0,12	21		
G12-Q-11	G12C-Q-11	G12K-Q-11	G12KC-Q-11	12	11	+0,10 +0,12	21		
G12-Q-12	G12C-Q-12	G12K-Q-12	G12KC-Q-12	12	12	+0,11 +0,13	21		

In questi articoli possiamo eseguire i seguenti rivestimenti: HDP RED, WONDER, TiN, INOX PLUS e ZIRINOS > vedi pag.16  
Available coatings for the up above mentioned items: HDP RED, WONDER, TiN, INOX PLUS and ZIRINOS > see page 16



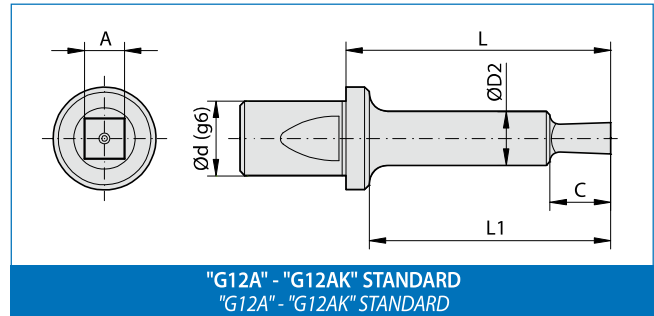
## BROCCHE G12A - DIAMETRO "d" DEL GAMBO: 12 mm G12A BROACHES - 12 mm SHANK DIAMETER ("d")

### Sezione ESAGONALE standard (E) Standard HEXAGONAL section (E)



"G12A" - "G12AK" STANDARD  
"G12A" - "G12AK" STANDARD

### Sezione QUADRA standard (Q) Standard SQUARE section (Q)

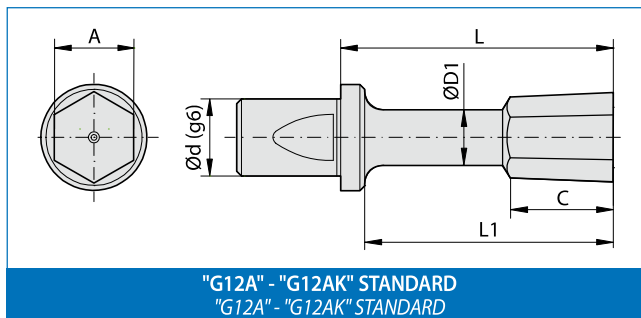


"G12A" - "G12AK" STANDARD  
"G12A" - "G12AK" STANDARD

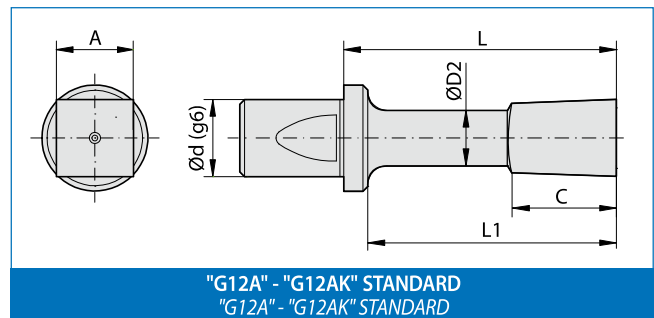
ESAGONALE / HEXAGONAL	
ARTICOLO (materiale) ITEM (material)	
HSS	SINTERIZZATO SINTERED
Standard	Standard
G12A-E-4	G12AK-E-4
G12A-E-4,5	G12AK-E-4,5
G12A-E-5	G12AK-E-5
G12A-E-5,5	G12AK-E-5,5
G12A-E-6	G12AK-E-6

QUADRA / SQUARE	
ARTICOLO (materiale) ITEM (material)	
HSS	SINTERIZZATO SINTERED
Standard	Standard
G12A-Q-4	G12AK-Q-4
G12A-Q-4,5	G12AK-Q-4,5
G12A-Q-5	G12AK-Q-5
G12A-Q-5,5	G12AK-Q-5,5
/	/

DIMENSIONI - DIMENSIONS								Utilizzo su Brocciatori/ Use on Broaching heads
d	A	L1	L	C	D1	D2		
12	4 +0,07 +0,09	55	60	15	10	10	Standard BR-G12A	
12	4,5 +0,07 +0,09	55	60	15	10	10		
12	5 +0,08 +0,10	55	60	15	10	10		
12	5,5 +0,08 +0,10	55	60	15	10	10		
12	6 +0,08 +0,10	55	60	15	10	/		
12	6 +0,08 +0,10	55	60	15	10	/		



"G12A" - "G12AK" STANDARD  
"G12A" - "G12AK" STANDARD



"G12A" - "G12AK" STANDARD  
"G12A" - "G12AK" STANDARD

/	/
G12A-E-7	G12AK-E-7
G12A-E-8	G12AK-E-8
G12A-E-9	G12AK-E-9
G12A-E-10	G12AK-E-10
G12A-E-11	G12AK-E-11
G12A-E-12	G12AK-E-12
G12A-E-13	G12AK-E-13
G12A-E-14	G12AK-E-14
G12A-E-15	G12AK-E-15

G12A-Q-6	G12AK-Q-6
G12A-Q-7	G12AK-Q-7
G12A-Q-8	G12AK-Q-8
G12A-Q-9	G12AK-Q-9
G12A-Q-10	G12AK-Q-10
G12A-Q-11	G12AK-Q-11
G12A-Q-12	G12AK-Q-12
/	/

12	6 +0,08 +0,10	55	60	19	/	7,7	Standard BR-G12A
12	7 +0,08 +0,10	55	60	19	6,7	7,7	
12	8 +0,08 +0,10	55	60	19	6,7	9,7	
12	9 +0,09 +0,11	55	60	19	7,7	9,7	
12	10 +0,10 +0,12	55	60	19	7,7	12	
12	11 +0,10 +0,12	55	60	19	9,7	12	
12	12 +0,11 +0,13	55	60	19	9,7	12	
12	13 +0,11 +0,13	55	60	19	11	12	
12	14 +0,12 +0,14	55	60	19	12	12	
12	15 +0,13 +0,15	55	60	19	12	12	

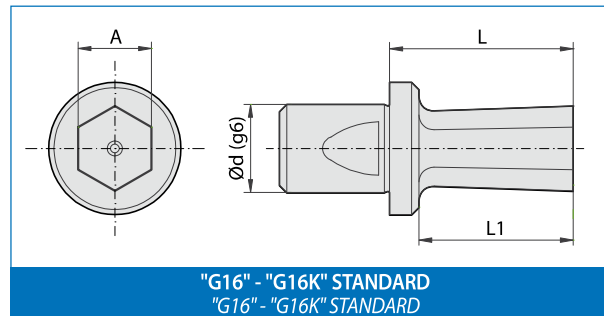
C = Profondità utile di brocciatura / C = Depth of the shape  
L1 = Profondità max. di lavoro / L1 = Maximum broaching depth

In questi articoli possiamo eseguire i seguenti rivestimenti: **HDP RED, WONDER, TiN, INOX PLUS e ZIRINOS** > vedi pag.16  
Available coatings for the up above mentioned items: **HDP RED, WONDER, TiN, INOX PLUS and ZIRINOS** > see page 16



**BROCCHE G16 - DIAMETRO "d" DEL GAMBO: 16 mm**  
*G16 BROACHES - 16 mm SHANK DIAMETER ("d")*

**Sezione ESAGONALE standard (E)**  
*Standard HEXAGONAL section (E)*



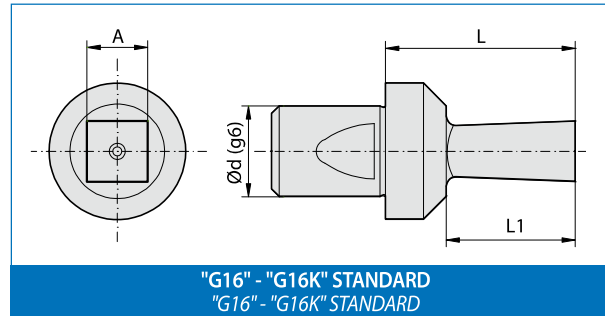
ARTICOLO (materiale) <i>ITEM (material)</i>		DIMENSIONI - DIMENSIONS				Utilizzo su Broccatori/ <i>Use on Broaching heads</i>
HSS	SINTERIZZATO <i>SINTERED</i>	d	A	L1	L	
Standard	Standard					<i>Standard BR-G16</i>
<b>G16-E-2</b>	<b>G16K-E-2</b>	16	2 +0,05 +0,07	5	25	
<b>G16-E-2,5</b>	<b>G16K-E-2,5</b>	16	2,5 +0,05 +0,07	6	25	
<b>G16-E-3</b>	<b>G16K-E-3</b>	16	3 +0,06 +0,08	7	25	
<b>G16-E-3,5</b>	<b>G16K-E-3,5</b>	16	3,5 +0,06 +0,08	8	25	
<b>G16-E-4</b>	<b>G16K-E-4</b>	16	4 +0,07 +0,09	9	25	
<b>G16-E-4,5</b>	<b>G16K-E-4,5</b>	16	4,5 +0,07 +0,09	9	25	
<b>G16-E-5</b>	<b>G16K-E-5</b>	16	5 +0,08 +0,10	11	25	
<b>G16-E-5,5</b>	<b>G16K-E-5,5</b>	16	5,5 +0,08 +0,10	11	25	
<b>G16-E-6</b>	<b>G16K-E-6</b>	16	6 +0,08 +0,10	13	25	
<b>G16-E-7</b>	<b>G16K-E-7</b>	16	7 +0,08 +0,10	15	25	
<b>G16-E-8</b>	<b>G16K-E-8</b>	16	8 +0,08 +0,10	17	25	
<b>G16-E-9</b>	<b>G16K-E-9</b>	16	9 +0,09 +0,11	19	25	
<b>G16-E-10</b>	<b>G16K-E-10</b>	16	10 +0,10 +0,12	21	25	
<b>G16-E-11</b>	<b>G16K-E-11</b>	16	11 +0,10 +0,12	21	25	
<b>G16-E-12</b>	<b>G16K-E-12</b>	16	12 +0,11 +0,13	21	25	
<b>G16-E-13</b>	<b>G16K-E-13</b>	16	13 +0,11 +0,13	21	25	
<b>G16-E-14</b>	<b>G16K-E-14</b>	16	14 +0,12 +0,14	21	25	
<b>G16-E-15</b>	<b>G16K-E-15</b>	16	15 +0,13 +0,15	21	25	
<b>G16-E-16</b>	<b>G16K-E-16</b>	16	16 +0,13 +0,15	21	25	
<b>G16-E-17</b>	<b>G16K-E-17</b>	16	17 +0,14 +0,16	21	25	
<b>G16-E-18</b>	<b>G16K-E-18</b>	16	18 +0,15 +0,17	21	25	
<b>G16-E-19</b>	<b>G16K-E-19</b>	16	19 +0,16 +0,18	21	25	
<b>G16-E-20</b>	<b>G16K-E-20</b>	16	20 +0,18 +0,20	21	25	
<b>G16-E-21</b>	<b>G16K-E-21</b>	16	21 +0,18 +0,20	21	25	
<b>G16-E-22</b>	<b>G16K-E-22</b>	16	22 +0,19 +0,21	21	25	
<b>G16-E-23</b>	<b>G16K-E-23</b>	16	23 +0,20 +0,22	21	25	
<b>G16-E-24</b>	<b>G16K-E-24</b>	16	24 +0,21 +0,23	21	25	
<b>G16-E-25</b>	<b>G16K-E-25</b>	16	25 +0,22 +0,24	21	25	

In questi articoli possiamo eseguire i seguenti rivestimenti: **HDP RED, WONDER, TiN, INOX PLUS e ZIRINOS** > vedi pag.16  
*Available coatings for the up above mentioned items: HDP RED, WONDER, TiN, INOX PLUS and ZIRINOS > see page 16*



## BROCCHE G16 - DIAMETRO "d" DEL GAMBO: 16 mm G16 BROACHES - 16 mm SHANK DIAMETER ("d")

### Sezione QUADRA standard (Q) Standard SQUARE section (Q)



ARTICOLO (materiale) ITEM (material)		DIMENSIONI - DIMENSIONS				Utilizzo su Brocciatori/ Use on Broaching heads
HSS	SINTERIZZATO SINTERED	d	A	L1	L	
Standard <input type="checkbox"/>	Standard <input type="checkbox"/>	d	A	L1	L	Standard BR-G16
<b>G16-Q-2</b>	<b>G16K-Q-2</b>	16	2 +0,05 +0,07	5	25	
<b>G16-Q-2,5</b>	<b>G16K-Q-2,5</b>	16	2,5 +0,05 +0,07	6	25	
<b>G16-Q-3</b>	<b>G16K-Q-3</b>	16	3 +0,06 +0,08	7	25	
<b>G16-Q-3,5</b>	<b>G16K-Q-3,5</b>	16	3,5 +0,07 +0,09	8	25	
<b>G16-Q-4</b>	<b>G16K-Q-4</b>	16	4 +0,07 +0,09	9	25	
<b>G16-Q-4,5</b>	<b>G16K-Q-4,5</b>	16	4,5 +0,07 +0,09	9	25	
<b>G16-Q-5</b>	<b>G16K-Q-5</b>	16	5 +0,08 +0,10	11	25	
<b>G16-Q-5,5</b>	<b>G16K-Q-5,5</b>	16	5,5 +0,08 +0,10	11	25	
<b>G16-Q-6</b>	<b>G16K-Q-6</b>	16	6 +0,08 +0,10	13	25	
<b>G16-Q-7</b>	<b>G16K-Q-7</b>	16	7 +0,08 +0,10	15	25	
<b>G16-Q-8</b>	<b>G16K-Q-8</b>	16	8 +0,08 +0,10	17	25	
<b>G16-Q-9</b>	<b>G16K-Q-9</b>	16	9 +0,09 +0,11	19	25	
<b>G16-Q-10</b>	<b>G16K-Q-10</b>	16	10 +0,10 +0,12	21	25	
<b>G16-Q-11</b>	<b>G16K-Q-11</b>	16	11 +0,10 +0,12	21	25	
<b>G16-Q-12</b>	<b>G16K-Q-12</b>	16	12 +0,11 +0,13	21	25	
<b>G16-Q-13</b>	<b>G16K-Q-13</b>	16	13 +0,11 +0,13	21	25	
<b>G16-Q-14</b>	<b>G16K-Q-14</b>	16	14 +0,12 +0,14	21	25	
<b>G16-Q-15</b>	<b>G16K-Q-15</b>	16	15 +0,13 +0,15	21	25	

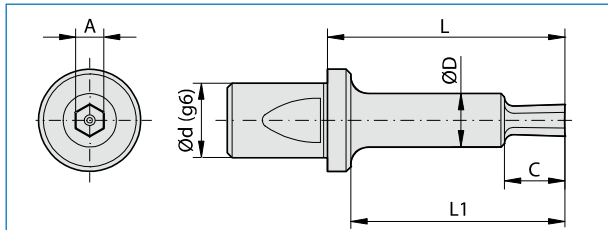
In questi articoli possiamo eseguire i seguenti rivestimenti: **HDP RED, WONDER, TiN, INOX PLUS e ZIRINOS** > vedi pag.16  
Available coatings for the up above mentioned items: **HDP RED, WONDER, TiN, INOX PLUS and ZIRINOS** > see page 16



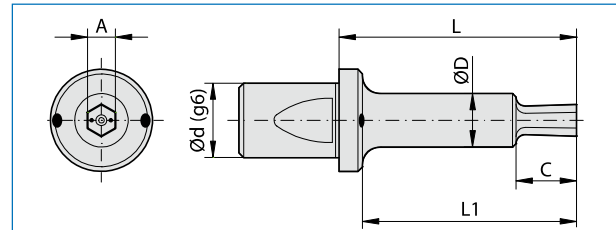


## BROCCHE G16M E G16MC - DIAMETRO "d" DEL GAMBO: 16 mm G16M AND G16MC BROACHES - 16 mm SHANK DIAMETER ("d")

### Sezione ESAGONALE (E) HEXAGONAL section (E)

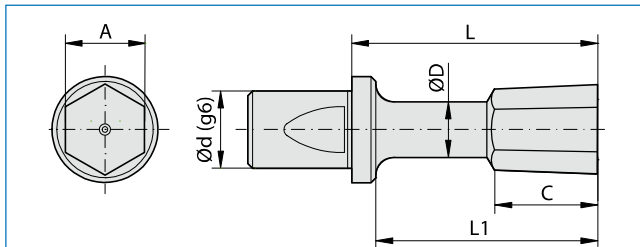


"G16M" - "G16MK" STANDARD  
"G16M" - "G16MK" STANDARD

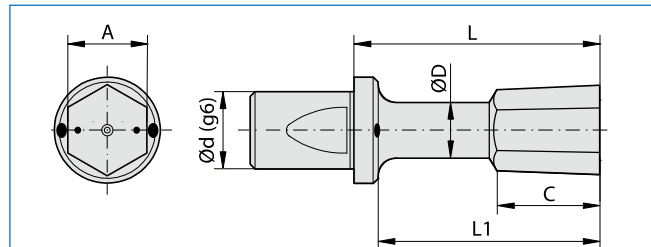


"G16MC" - "G16MKC" CON PASSAGGIO REFRIGERANTE INTERNO  
"G16MC" - "G16MKC" WITH INTERNAL FLOW OF COOLANT

ARTICOLO (materiale) - ITEM (material)				DIMENSIONI - DIMENSIONS						Utilizzo su Broccatori/ Use on Broaching heads	
HSS		SINTERIZZATO / SINTERED		d	A	L1	L	C	D		
Standard	Ref. / Cool.	Standard	Ref. / Cool.								
G16M-E-5	G16MC-E-5	G16MK-E-5	G16MKC-E-5	16	5	+0,08 +0,10	31	35	11	9,4	Standard <b>BR-G16M</b>
G16M-E-5,5	G16MC-E-5,5	G16MK-E-5,5	G16MKC-E-5,5	16	5,5	+0,08 +0,10	31	35	11	9,4	
G16M-E-6	G16MC-E-6	G16MK-E-6	G16MKC-E-6	16	6	+0,08 +0,10	31	35	13	9,4	Refrig. / Cool. <b>BRC-G16M</b>
G16M-E-7	G16MC-E-7	G16MK-E-7	G16MKC-E-7	16	7	+0,08 +0,10	31	35	15	9,4	



"G16M" - "G16MK" STANDARD  
"G16M" - "G16MK" STANDARD



"G16MC" - "G16MKC" CON PASSAGGIO REFRIGERANTE INTERNO  
"G16MC" - "G16MKC" WITH INTERNAL FLOW OF COOLANT

G16M-E-8	G16MC-E-8	G16MK-E-8	G16MKC-E-8	16	8	+0,08 +0,10	31	35	16	7,1	Standard <b>BR-G16M</b>
G16M-E-9	G16MC-E-9	G16MK-E-9	G16MKC-E-9	16	9	+0,09 +0,11	31	35	15	8	
G16M-E-10	G16MC-E-10	G16MK-E-10	G16MKC-E-10	16	10	+0,10 +0,12	31	35	15	8	
G16M-E-11	G16MC-E-11	G16MK-E-11	G16MKC-E-11	16	11	+0,10 +0,12	31	35	15	9	
G16M-E-12	G16MC-E-12	G16MK-E-12	G16MKC-E-12	16	12	+0,11 +0,13	31	35	15	10	
G16M-E-13	G16MC-E-13	G16MK-E-13	G16MKC-E-13	16	13	+0,11 +0,13	31	35	15	11	
G16M-E-14	G16MC-E-14	G16MK-E-14	G16MKC-E-14	16	14	+0,12 +0,14	31	35	15	12	
G16M-E-15	G16MC-E-15	G16MK-E-15	G16MKC-E-15	16	15	+0,13 +0,15	31	35	15	13	
G16M-E-16	G16MC-E-16	G16MK-E-16	G16MKC-E-16	16	16	+0,13 +0,15	31	35	15	14	
G16M-E-17	G16MC-E-17	G16MK-E-17	G16MKC-E-17	16	17	+0,14 +0,16	31	35	15	15	
G16M-E-18	G16MC-E-18	G16MK-E-18	G16MKC-E-18	16	18	+0,15 +0,17	31	35	15	16	Refrig. / Cool. <b>BRC-G16M</b>
G16M-E-19	G16MC-E-19	G16MK-E-19	G16MKC-E-19	16	19	+0,16 +0,18	31	35	13,5	17	
G16M-E-20	G16MC-E-20	G16MK-E-20	G16MKC-E-20	16	20	+0,18 +0,20	31	35	13,5	18	
G16M-E-21	G16MC-E-21	G16MK-E-21	G16MKC-E-21	16	21	+0,18 +0,20	31	35	13	19	
G16M-E-22	G16MC-E-22	G16MK-E-22	G16MKC-E-22	16	22	+0,19 +0,21	31	35	13	20	

C = Profondità utile di brocciatura / C = Depth of the shape  
L1 = Profondità max. di lavoro / L1 = Maximum broaching depth

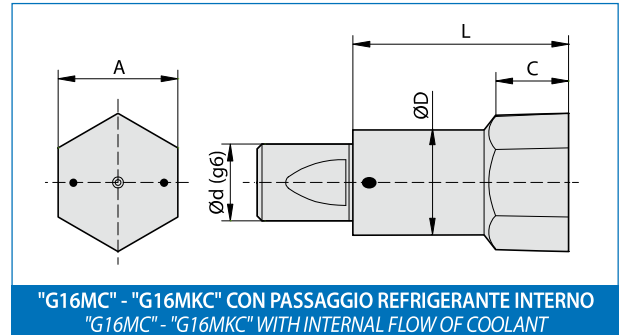
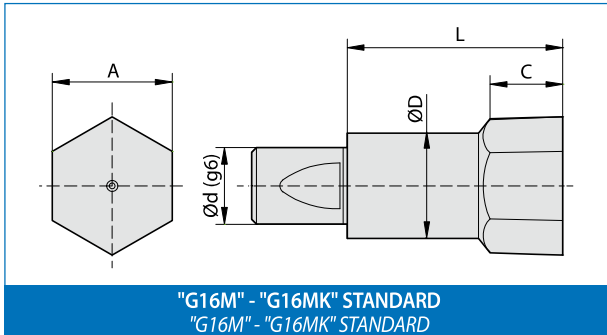
segue / continued >>

In questi articoli possiamo eseguire i seguenti rivestimenti: **HDP RED, WONDER, TiN, INOX PLUS e ZIRINOS** > vedi pag.16  
Available coatings for the up above mentioned items: **HDP RED, WONDER, TiN, INOX PLUS and ZIRINOS** > see page 16



>> segue / continued

**BROCCHE G16M E G16MC - DIAMETRO "d" DEL GAMBO: 16 mm**  
*G16M AND G16MC BROACHES - 16 mm SHANK DIAMETER ("d")*



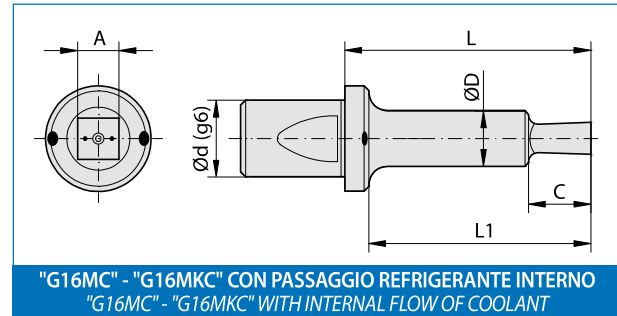
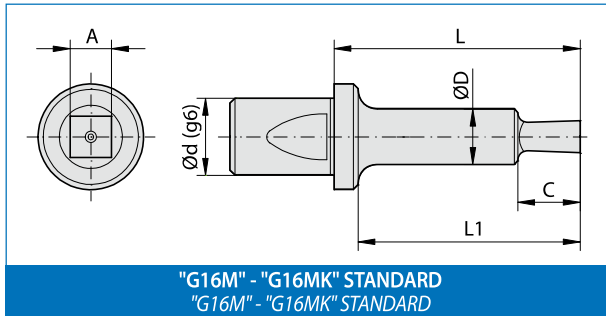
ARTICOLO (materiale) - ITEM (material)				DIMENSIONI - DIMENSIONS					Utilizzo su Brocciatori/ Use on Broaching heads
HSS		SINTERIZZATO / SINTERED		d	A	L	C	D	
Standard	Ref. / Cool.	Standard	Ref. / Cool.						
G16M-E-23	G16MC-E-23	G16MK-E-23	G16MKC-E-23	16	23 +0,20 +0,22	35	13,2	22	Standard <b>BR-G16M</b>  Refrig. / Cool. <b>BRC-G16M</b>
G16M-E-24	G16MC-E-24	G16MK-E-24	G16MKC-E-24	16	24 +0,21 +0,23	35	13,2	22	
G16M-E-25	G16MC-E-25	G16MK-E-25	G16MKC-E-25	16	25 +0,22 +0,24	35	11,5	22	
G16M-E-27	G16MC-E-27	G16MK-E-27	G16MKC-E-27	16	27 +0,22 +0,24	35	11,5	22	
G16M-E-28	G16MC-E-28	G16MK-E-28	G16MKC-E-28	16	28 +0,22 +0,24	35	11,5	22	
G16M-E-30	G16MC-E-30	G16MK-E-30	G16MKC-E-30	16	30 +0,23 +0,25	35	11,5	22	

In questi articoli possiamo eseguire i seguenti rivestimenti: **HDP RED, WONDER, TiN, INOX PLUS e ZIRINOS** > vedi pag.16  
 Available coatings for the up above mentioned items: **HDP RED, WONDER, TiN, INOX PLUS and ZIRINOS** > see page 16

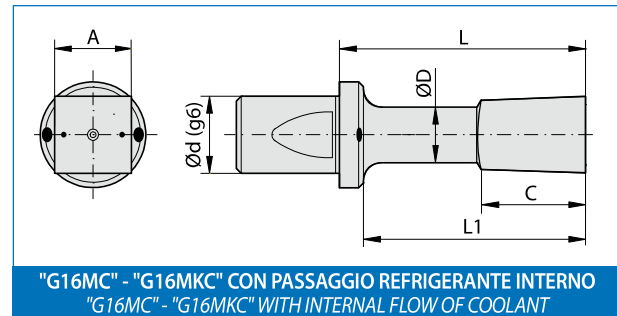
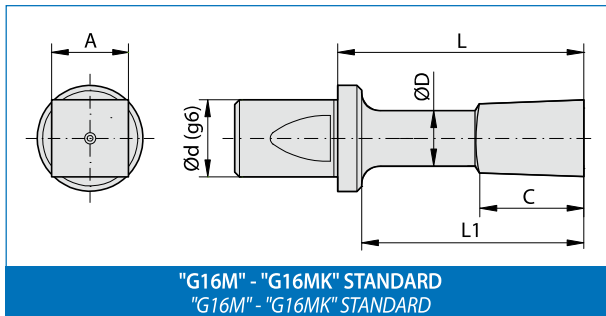


## BROCCHE G16M E G16MC - DIAMETRO "d" DEL GAMBO: 16 mm G16M AND G16MC BROACHES - 16 mm SHANK DIAMETER ("d")

### Sezione QUADRA (Q) SQUARE section (Q)



ARTICOLO (materiale) - ITEM (material)				DIMENSIONI - DIMENSIONS						Utilizzo su Broccatori / Use on Broaching heads	
HSS		SINTERIZZATO / SINTERED		d	A	L1	L	C	D		
Standard <input type="checkbox"/>	Ref. / Cool. <input type="checkbox"/>	Standard <input type="checkbox"/>	Ref. / Cool. <input type="checkbox"/>								
G16M-Q-5	G16MC-Q-5	G16MK-Q-5	G16MKC-Q-5	16	5	+0,08 +0,10	11	35	11	10	Standard BR-G16M Refrig. / Cool. BRC-G16M
G16M-Q-5,5	G16MC-Q-5,5	G16MK-Q-5,5	G16MKC-Q-5,5	16	5,5	+0,08 +0,10	11	35	13	10	
G16M-Q-6	G16MC-Q-6	G16MK-Q-6	G16MKC-Q-6	16	6	+0,08 +0,10	13	35	13	10	



G16M-Q-7	G16MC-Q-7	G16MK-Q-7	G16MKC-Q-7	16	7	+0,08 +0,10	31	35	14	6,9	Standard BR-G16M Refrig. / Cool. BRC-G16M
G16M-Q-8	G16MC-Q-8	G16MK-Q-8	G16MKC-Q-8	16	8	+0,08 +0,10	31	35	14,5	7	
G16M-Q-9	G16MC-Q-9	G16MK-Q-9	G16MKC-Q-9	16	9	+0,09 +0,11	31	35	14,5	8	
G16M-Q-10	G16MC-Q-10	G16MK-Q-10	G16MKC-Q-10	16	10	+0,10 +0,12	31	35	14,5	9	
G16M-Q-11	G16MC-Q-11	G16MK-Q-11	G16MKC-Q-11	16	11	+0,10 +0,12	31	35	15	10	
G16M-Q-12	G16MC-Q-12	G16MK-Q-12	G16MKC-Q-12	16	12	+0,11 +0,13	31	35	15	11	
G16M-Q-13	G16MC-Q-13	G16MK-Q-13	G16MKC-Q-13	16	13	+0,11 +0,13	31	35	13,5	12	
G16M-Q-14	G16MC-Q-14	G16MK-Q-14	G16MKC-Q-14	16	14	+0,12 +0,14	31	35	13,5	13	
G16M-Q-15	G16MC-Q-15	G16MK-Q-15	G16MKC-Q-15	16	15	+0,13 +0,15	31	35	13,5	14	
G16M-Q-16	G16MC-Q-16	G16MK-Q-16	G16MKC-Q-16	16	16	+0,13 +0,15	31	35	13,5	15	
G16M-Q-17	G16MC-Q-17	G16MK-Q-17	G16MKC-Q-17	16	17	+0,14 +0,16	31	35	13	16	
G16M-Q-18	G16MC-Q-18	G16MK-Q-18	G16MKC-Q-18	16	18	+0,15 +0,17	31	35	13	17	
G16M-Q-19	G16MC-Q-19	G16MK-Q-19	G16MKC-Q-19	16	19	+0,16 +0,18	31	35	13	18	
G16M-Q-20	G16MC-Q-20	G16MK-Q-20	G16MKC-Q-20	16	20	+0,18 +0,20	31	35	13	19	

C = Profondità utile di brocciatura / C = Depth of the shape  
L1 = Profondità max. di lavoro / L1 = Maximum broaching depth

In questi articoli possiamo eseguire i seguenti rivestimenti: **HDP RED, WONDER, TiN, INOX PLUS e ZIRINOS** > vedi pag.16  
Available coatings for the up above mentioned items: **HDP RED, WONDER, TiN, INOX PLUS and ZIRINOS** > see page 16

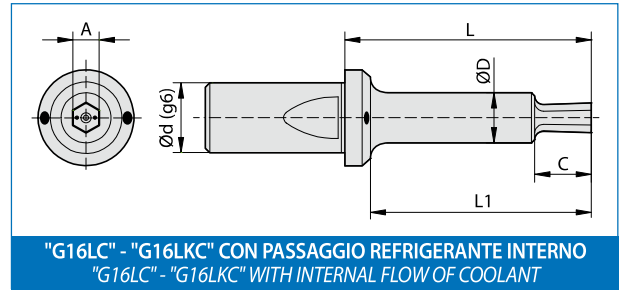
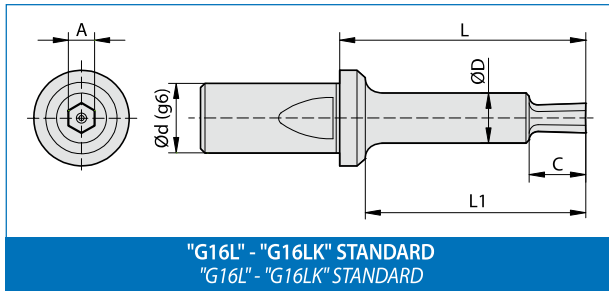


## BROCCHE G16L E G16LC - DIAMETRO "d" DEL GAMBO: 16 mm

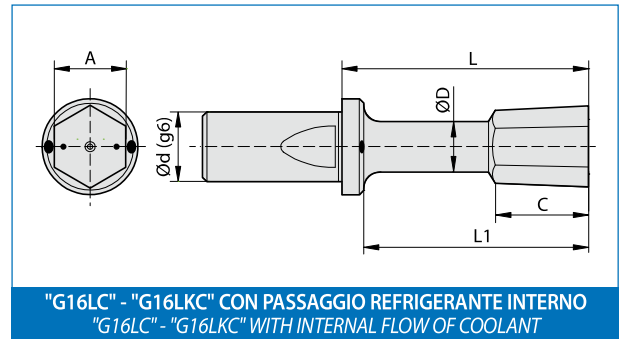
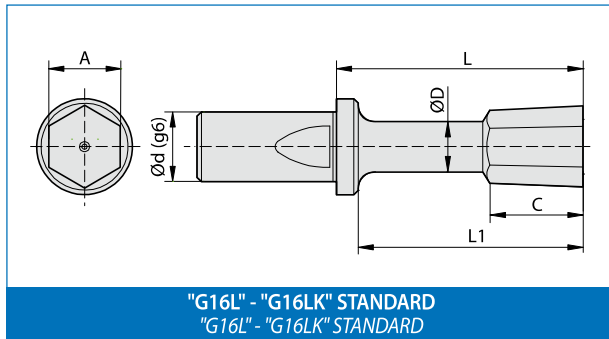
G16L AND G16LC BROACHES - 16 mm SHANK DIAMETER ("d")

### Sezione ESAGONALE (E)

HEXAGONAL section (E)



ARTICOLO (materiale) - ITEM (material)				DIMENSIONI - DIMENSIONS						Utilizzo su Brocciatori/ Use on Broaching heads
HSS		SINTERIZZATO / SINTERED		d	A	L1	L	C	D	
Standard	Ref. / Cool.	Standard	Ref. / Cool.							
G16L-E-4	/	G16LK-E-4	/	16	4 +0,07 +0,09	41	45	9	7,5	Standard BR-G16L Refrig. / Cool. BRC-G16L
G16L-E-5		G16LK-E-5		16	5 +0,08 +0,10	41	45	11	9	



G16L-E-6	/	G16LK-E-6	/	16	6 +0,08 +0,10	41	45	13	6,5	Standard BR-G16L  Refrig. / Cool. BRC-G16L
G16L-E-7		G16LK-E-7		16	7 +0,08 +0,10	41	45	15	6,5	
G16L-E-8	G16LC-E-8	G16LK-E-8	G16LKC-E-8	16	8 +0,08 +0,10	41	45	16	6,5	
G16L-E-9	G16LC-E-9	G16LK-E-9	G16LKC-E-9	16	9 +0,09 +0,11	41	45	16,5	7,5	
G16L-E-10	G16LC-E-10	G16LK-E-10	G16LKC-E-10	16	10 +0,10 +0,12	41	45	17	7,5	
G16L-E-11	G16LC-E-11	G16LK-E-11	G16LKC-E-11	16	11 +0,10 +0,12	41	45	17	8,5	
G16L-E-12	G16LC-E-12	G16LK-E-12	G16LKC-E-12	16	12 +0,11 +0,13	41	45	17	9,5	
G16L-E-13	G16LC-E-13	G16LK-E-13	G16LKC-E-13	16	13 +0,11 +0,13	41	45	17	10,5	
G16L-E-14	G16LC-E-14	G16LK-E-14	G16LKC-E-14	16	14 +0,12 +0,14	41	45	17	11,5	
G16L-E-15	G16LC-E-15	G16LK-E-15	G16LKC-E-15	16	15 +0,13 +0,15	41	45	17	12,5	
G16L-E-16	G16LC-E-16	G16LK-E-16	G16LKC-E-16	16	16 +0,13 +0,15	41	45	17	13,5	
G16L-E-17	G16LC-E-17	G16LK-E-17	G16LKC-E-17	16	17 +0,14 +0,16	41	45	17	14,5	
G16L-E-18	G16LC-E-18	G16LK-E-18	G16LKC-E-18	16	18 +0,15 +0,17	41	45	17	15,5	
G16L-E-19	G16LC-E-19	G16LK-E-19	G16LKC-E-19	16	19 +0,16 +0,18	41	45	17	16,5	
G16L-E-20	G16LC-E-20	G16LK-E-20	G16LKC-E-20	16	20 +0,18 +0,20	41	45	17	17,5	
G16L-E-21	G16LC-E-21	G16LK-E-21	G16LKC-E-21	16	21 +0,18 +0,20	41	45	17	18,5	
G16L-E-22	G16LC-E-22	G16LK-E-22	G16LKC-E-22	16	22 +0,19 +0,21	41	45	17	19,5	
G16L-E-23	G16LC-E-23	G16LK-E-23	G16LKC-E-23	16	23 +0,20 +0,22	41	45	17	20,5	

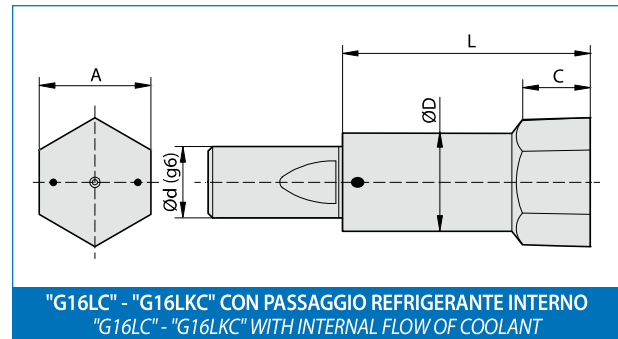
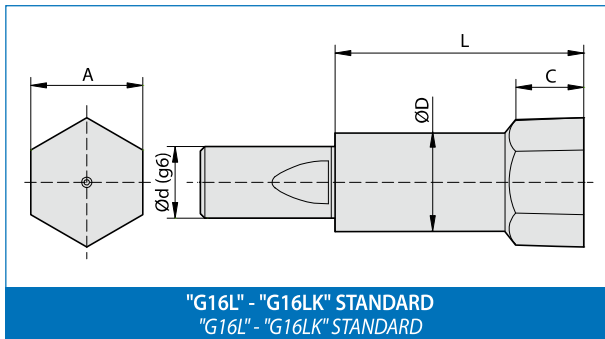
C = Profondità utile di brocciatura / C = Depth of the shape  
L1 = Profondità max. di lavoro / L1 = Maximum broaching depth

segue / continued >>

In questi articoli possiamo eseguire i seguenti rivestimenti: **HDP RED, WONDER, TiN, INOX PLUS e ZIRINOS** > vedi pag.16  
Available coatings for the up above mentioned items: **HDP RED, WONDER, TiN, INOX PLUS and ZIRINOS** > see page 16



>> segue / continued

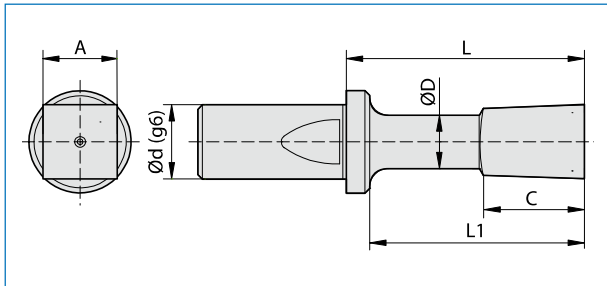


ARTICOLO (materiale) - ITEM (material)				DIMENSIONI - DIMENSIONS					Utilizzo su Brocciatori/ Use on Broaching heads
HSS		SINTERIZZATO / SINTERED		d	A	L	C	D	
Standard	Ref. / Cool.	Standard	Ref. / Cool.						
G16L-E-24	G16LC-E-24	G16LK-E-24	G16LKC-E-24	16	24 +0,21 +0,23	45	17	22	Standard BR-G16L  Refrig. / Cool. BRC-G16L
G16L-E-25	G16LC-E-25	G16LK-E-25	G16LKC-E-25	16	25 +0,22 +0,24	45	17	22	
G16L-E-27	G16LC-E-27	G16LK-E-27	G16LKC-E-27	16	27 +0,22 +0,24	45	18	22	
G16L-E-28	G16LC-E-28	G16LK-E-28	G16LKC-E-28	16	28 +0,22 +0,24	45	18	22	
G16L-E-30	G16LC-E-30	G16LK-E-30	G16LKC-E-30	16	30 +0,23 +0,25	45	17	22	

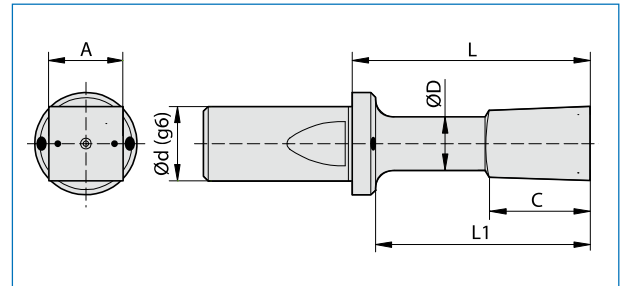
C = Profondità utile di brocciatura / C = Depth of the shape  
L1 = Profondità max. di lavoro / L1 = Maximum broaching depth

## BROCCHE G16L E G16LC - DIAMETRO "d" DEL GAMBO: 16 mm G16L AND G16LC BROACHES - 16 mm SHANK DIAMETER ("d")

### Sezione QUADRA (Q) SQUARE section (Q)



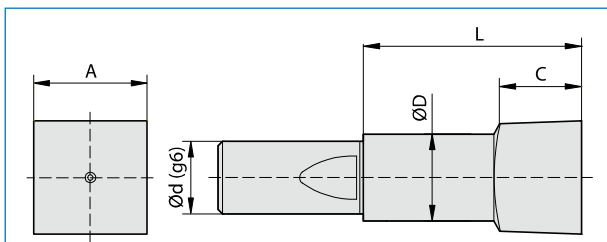
"G16L" - "G16LK" STANDARD  
"G16L" - "G16LK" STANDARD



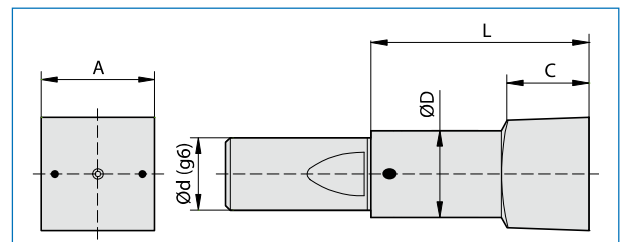
"G16LC" - "G16LKC" CON PASSAGGIO REFRIGERANTE INTERNO  
"G16LC" - "G16LKC" WITH INTERNAL FLOW OF COOLANT

ARTICOLO (materiale) - ITEM (material)				DIMENSIONI - DIMENSIONS						Utilizzo su Brocciatori/ Use on Broaching heads
HSS		SINTERIZZATO / SINTERED		d	A	L1	L	C	D	
Standard <input type="checkbox"/>	Ref. / Cool. <input type="checkbox"/>	Standard <input type="checkbox"/>	Ref. / Cool. <input type="checkbox"/>							
G16L-Q-6	/	G16LK-Q-6	/	16	6	+0,08 +0,10	41	45	17	6
G16L-Q-7		G16LK-Q-7		G16LK-Q-7	16	7	+0,08 +0,10	41	45	17
G16L-Q-8	G16LC-Q-8	G16LK-Q-8	G16LKC-Q-8	16	8	+0,08 +0,10	41	45	17	6,5
G16L-Q-9	G16LC-Q-9	G16LK-Q-9	G16LKC-Q-9	16	9	+0,09 +0,11	41	45	17	8
G16L-Q-10	G16LC-Q-10	G16LK-Q-10	G16LKC-Q-10	16	10	+0,10 +0,12	41	45	17	8,5
G16L-Q-11	G16LC-Q-11	G16LK-Q-11	G16LKC-Q-11	16	11	+0,10 +0,12	41	45	17	9,5
G16L-Q-12	G16LC-Q-12	G16LK-Q-12	G16LKC-Q-12	16	12	+0,11 +0,13	41	45	17	10,5
G16L-Q-13	G16LC-Q-13	G16LK-Q-13	G16LKC-Q-13	16	13	+0,11 +0,13	41	45	18	11,5
G16L-Q-14	G16LC-Q-14	G16LK-Q-14	G16LKC-Q-14	16	14	+0,12 +0,14	41	45	18	12,5
G16L-Q-15	G16LC-Q-15	G16LK-Q-15	G16LKC-Q-15	16	15	+0,13 +0,15	41	45	18	13,5
G16L-Q-16	G16LC-Q-16	G16LK-Q-16	G16LKC-Q-16	16	16	+0,13 +0,15	41	45	18	14,5
G16L-Q-17	G16LC-Q-17	G16LK-Q-17	G16LKC-Q-17	16	17	+0,14 +0,16	41	45	18	15,5
G16L-Q-18	G16LC-Q-18	G16LK-Q-18	G16LKC-Q-18	16	18	+0,15 +0,17	41	45	17	16,5
G16L-Q-19	G16LC-Q-19	G16LK-Q-19	G16LKC-Q-19	16	19	+0,16 +0,18	41	45	17	17,5
G16L-Q-20	G16LC-Q-20	G16LK-Q-20	G16LKC-Q-20	16	20	+0,18 +0,20	41	45	17	18,5
G16L-Q-21	G16LC-Q-21	G16LK-Q-21	G16LKC-Q-21	16	21	+0,18 +0,20	41	45	17	19,5
G16L-Q-22	G16LC-Q-22	G16LK-Q-22	G16LKC-Q-22	16	22	+0,19 +0,21	41	45	16,5	20,5
G16L-Q-23	G16LC-Q-23	G16LK-Q-23	G16LKC-Q-23	16	23	+0,20 +0,22	41	45	16,5	21

Standard  
BR-G16L  
  
Refrig. / Cool.  
BRC-G16L



"G16L" - "G16LK" STANDARD  
"G16L" - "G16LK" STANDARD



"G16LC" - "G16LKC" CON PASSAGGIO REFRIGERANTE INTERNO  
"G16LC" - "G16LKC" WITH INTERNAL FLOW OF COOLANT

G16L-Q-24	G16LC-Q-24	G16LK-Q-24	G16LKC-Q-24	16	24	+0,21 +0,23	-	45	16	22
G16L-Q-25	G16LC-Q-25	G16LK-Q-25	G16LKC-Q-25	16	25	+0,22 +0,24	-	45	16	22

Standard  
BR-G16L  
  
Refrig. / Cool.  
BRC-G16L

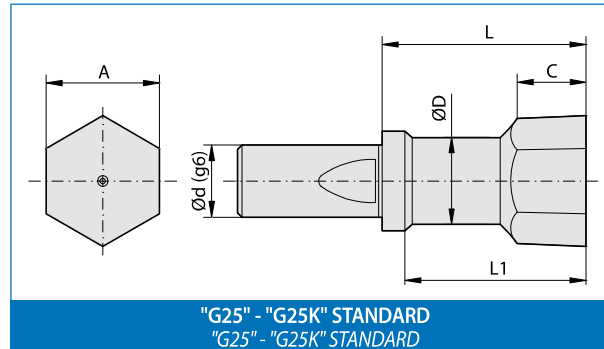
C = Profondità utile di brocciatura / C = Depth of the shape  
L1 = Profondità max. di lavoro / L1 = Maximum broaching depth



In questi articoli possiamo eseguire i seguenti rivestimenti: **HDP RED, WONDER, TiN, INOX PLUS e ZIRINOS** > vedi pag.16  
Available coatings for the up above mentioned items: **HDP RED, WONDER, TiN, INOX PLUS and ZIRINOS** > see page 16



**BROCCHE G25 - DIAMETRO "d" DEL GAMBO: 25 mm**  
**G25 BROACHES - 25 mm SHANK DIAMETER ("d")**

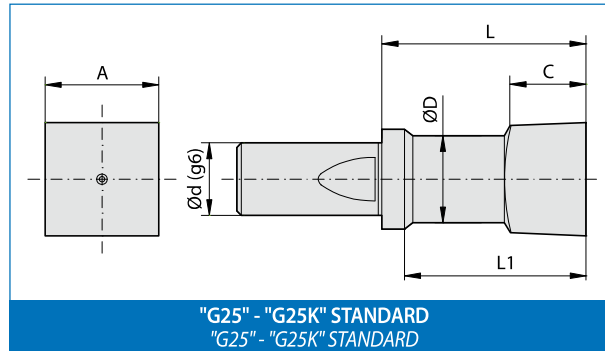
**Sezione ESAGONALE standard (E)**  
**Standard HEXAGONAL section (E)**



ARTICOLO (materiale) ITEM (material)		DIMENSIONI - DIMENSIONS							Utilizzo su Broccatori/ Use on Broaching heads
HSS	SINTERIZZATO SINTERED	d	A	L1	L	C	D		
Standard 	Standard 								
G25-E-15	G25K-E-15	25	15 +0,13 +0,15	65	70	32	13,5	Standard BR-G25	
G25-E-16	G25K-E-16	25	16 +0,13 +0,15	65	70	32	13,5		
G25-E-17	G25K-E-17	25	17 +0,14 +0,16	65	70	32	15,5		
G25-E-18	G25K-E-18	25	18 +0,15 +0,17	65	70	32	15,5		
G25-E-19	G25K-E-19	25	19 +0,16 +0,18	65	70	32	16		
G25-E-20	G25K-E-20	25	20 +0,18 +0,20	65	70	32	16		
G25-E-21	G25K-E-21	25	21 +0,18 +0,20	65	70	32	17		
G25-E-22	G25K-E-22	25	22 +0,20 +0,22	65	70	32	19		
G25-E-23	G25K-E-23	25	23 +0,20 +0,22	65	70	32	19		
G25-E-24	G25K-E-24	25	24 +0,21 +0,23	65	70	32	21		
G25-E-25	G25K-E-25	25	25 +0,22 +0,24	65	70	32	21		
G25-E-26	G25K-E-26	25	26 +0,22 +0,24	65	70	32	23		
G25-E-27	G25K-E-27	25	27 +0,22 +0,24	65	70	32	24		
G25-E-28	G25K-E-28	25	28 +0,22 +0,24	65	70	32	24		
G25-E-29	G25K-E-29	25	29 +0,22 +0,24	65	70	32	24		
G25-E-30	G25K-E-30	25	30 +0,23 +0,25	65	70	32	26		
G25-E-31	G25K-E-31	25	31 +0,23 +0,25	65	70	32	26		
G25-E-32	G25K-E-32	25	32 +0,23 +0,25	65	70	32	26		
G25-E-33	G25K-E-33	25	33 +0,23 +0,25	65	70	32	28		
G25-E-34	G25K-E-34	25	34 +0,23 +0,25	65	70	32	28		
G25-E-35	G25K-E-35	25	35 +0,24 +0,26	65	70	32	28		
G25-E-36	G25K-E-36	25	36 +0,24 +0,26	65	70	32	32		
G25-E-37	G25K-E-37	25	37 +0,24 +0,26	65	70	32	32		
G25-E-38	G25K-E-38	25	38 +0,24 +0,26	65	70	32	32		
G25-E-39	G25K-E-39	25	39 +0,24 +0,26	65	70	32	32		
G25-E-40	G25K-E-40	25	40 +0,24 +0,26	65	70	32	32		

## BROCCHE G25 - DIAMETRO "d" DEL GAMBO: 25 mm G25 BROACHES - 25 mm SHANK DIAMETER ("d")

### Sezione QUADRA standard (Q) Standard SQUARE section (Q)



ARTICOLO (materiale) ITEM (material)		DIMENSIONI - DIMENSIONS							Utilizzo su Brocciatori/ Use on Broaching heads
HSS	SINTERIZZATO SINTERED	d	A	L1	L	C	D		
Standard <input type="checkbox"/>	Standard <input type="checkbox"/>	d	A	L1	L	C	D	<b>Standard BR-G25</b>	
<b>G25-Q-15</b>	<b>G25K-Q-15</b>	25	15 +0,13 +0,15	65	70	32	12		
<b>G25-Q-16</b>	<b>G25K-Q-16</b>	25	16 +0,13 +0,15	65	70	32	12		
<b>G25-Q-17</b>	<b>G25K-Q-17</b>	25	17 +0,14 +0,16	65	70	32	14		
<b>G25-Q-18</b>	<b>G25K-Q-18</b>	25	18 +0,15 +0,17	65	70	32	14		
<b>G25-Q-19</b>	<b>G25K-Q-19</b>	25	19 +0,16 +0,18	65	70	32	16		
<b>G25-Q-20</b>	<b>G25K-Q-20</b>	25	20 +0,18 +0,20	65	70	32	16		
<b>G25-Q-21</b>	<b>G25K-Q-21</b>	25	21 +0,18 +0,20	65	70	32	18		
<b>G25-Q-22</b>	<b>G25K-Q-22</b>	25	22 +0,20 +0,22	65	70	32	18		
<b>G25-Q-23</b>	<b>G25K-Q-23</b>	25	23 +0,20 +0,22	65	70	32	20		
<b>G25-Q-24</b>	<b>G25K-Q-24</b>	25	24 +0,21 +0,23	65	70	32	20		
<b>G25-Q-25</b>	<b>G25K-Q-25</b>	25	25 +0,22 +0,24	65	70	32	20		

C = Profondità utile di brocciatura / C = Depth of the shape  
L1 = Profondità max. di lavoro / L1 = Maximum broaching depth

In questi articoli possiamo eseguire i seguenti rivestimenti: **HDP RED, WONDER, TiN, INOX PLUS e ZIRINOS** > vedi pag.16  
Available coatings for the up above mentioned items: **HDP RED, WONDER, TiN, INOX PLUS and ZIRINOS** > see page 16



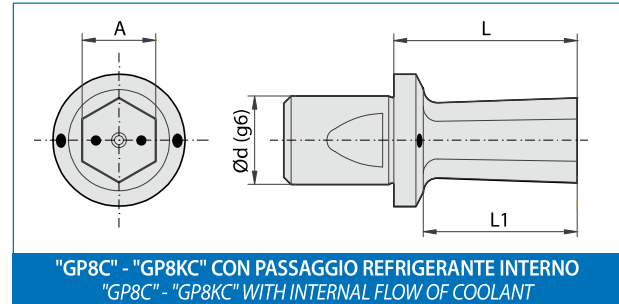
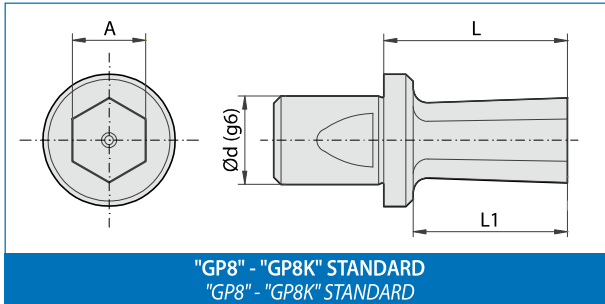


# Brocche Standard per cave poligonali su Brocciatori serie "BR" e "BRC" - Misure in pollici

## Standard Broaches for polygonal holes on broaching heads "BR" and "BRC" series - Size in inches

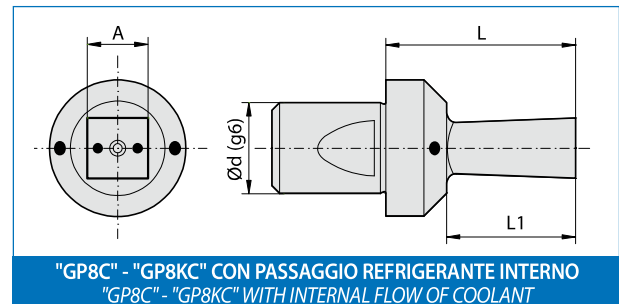
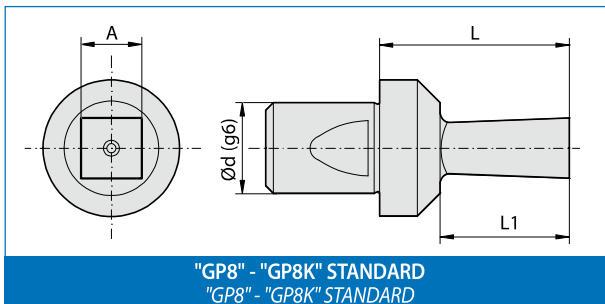
**BROCCE GP8 E GP8C - DIAMETRO "d" DEL GAMBO: 8 mm - MISURE IN POLLICI**  
**GP8 AND GP8C BROACHES - 8 mm SHANK DIAMETER ("d") - SIZES IN INCHES**

### Sezione ESAGONALE (E) / HEXAGONAL section (E)



ARTICOLO (materiale) - ITEM (material)				DIMENSIONI - DIMENSIONS				Utilizzo su Brocciatori/ Use on Broaching heads
HSS		SINTERIZZATO / SINTERED		d	A	L1	L	
Standard	Ref. / Cool.	Standard	Ref. / Cool.					Standard BR-G8S BR-G8M BR-G8 Refrig. / Cool. BRC-G8
GP8-E-3/32"	GP8C-E-3/32"	GP8K-E-3/32"	GP8KC-E-3/32"	8	2,38 +0,06 +0,08	5	18	
GP8-E-1/8"	GP8C-E-1/8"	GP8K-E-1/8"	GP8KC-E-1/8"	8	3,17 +0,07 +0,09	6	18	
GP8-E-5/32"	GP8C-E-5/32"	GP8K-E-5/32"	GP8KC-E-5/32"	8	3,97 +0,08 +0,10	8	18	
GP8-E-3/16"	GP8C-E-3/16"	GP8K-E-3/16"	GP8KC-E-3/16"	8	4,76 +0,08 +0,10	9	18	
GP8-E-7/32"	GP8C-E-7/32"	GP8K-E-7/32"	GP8KC-E-7/32"	8	5,55 +0,08 +0,10	11	18	
GP8-E-1/4"	GP8C-E-1/4"	GP8K-E-1/4"	GP8KC-E-1/4"	8	6,35 +0,08 +0,10	13	18	

### Sezione QUADRA (Q) / SQUARE section (Q)



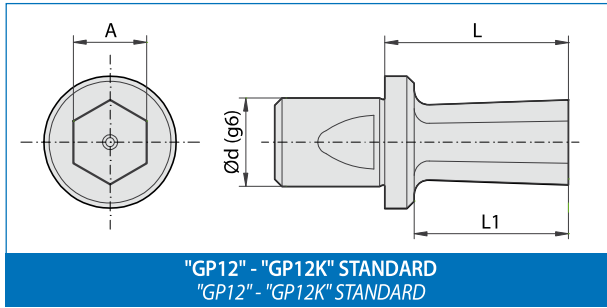
ARTICOLO (materiale) - ITEM (material)				DIMENSIONI - DIMENSIONS				Utilizzo su Brocciatori/ Use on Broaching heads
HSS		SINTERIZZATO / SINTERED		d	A	L1	L	
Standard	Ref. / Cool.	Standard	Ref. / Cool.					Standard BR-G8S BR-G8M BR-G8 Refrig. / Cool. BRC-G8
GP8-Q-3/32"	GP8C-Q-3/32"	GP8K-Q-3/32"	GP8KC-Q-3/32"	8	2,38 +0,06 +0,08	5	18	
GP8-Q-1/8"	GP8C-Q-1/8"	GP8K-Q-1/8"	GP8KC-Q-1/8"	8	3,17 +0,07 +0,09	6	18	
GP8-Q-5/32"	GP8C-Q-5/32"	GP8K-Q-5/32"	GP8KC-Q-5/32"	8	3,97 +0,08 +0,10	8	18	
GP8-Q-3/16"	GP8C-Q-3/16"	GP8K-Q-3/16"	GP8KC-Q-3/16"	8	4,76 +0,08 +0,10	9	18	
GP8-Q-7/32"	GP8C-Q-7/32"	GP8K-Q-7/32"	GP8KC-Q-7/32"	8	5,55 +0,08 +0,10	11	18	
GP8-Q-1/4"	GP8C-Q-1/4"	GP8K-Q-1/4"	GP8KC-Q-1/4"	8	6,35 +0,08 +0,10	13	18	

In questi articoli possiamo eseguire i seguenti rivestimenti: **HDP RED, WONDER, TiN, INOX PLUS e ZIRINOS** > vedi pag.16  
 Available coatings for the up above mentioned items: **HDP RED, WONDER, TiN, INOX PLUS and ZIRINOS** > see page 16

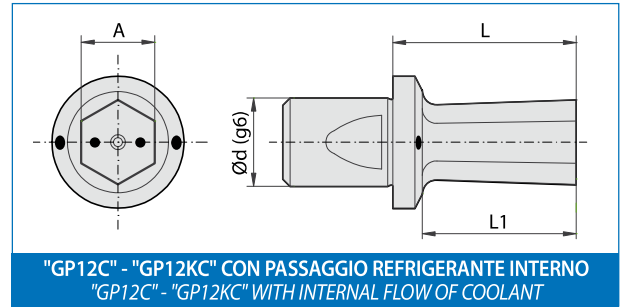


**BROCCHE GP12 E GP12C - DIAMETRO "d" DEL GAMBO: 12 mm - MISURE IN POLLICI**  
*GP12 E GP12C BROACHES - 12 mm SHANK DIAMETER ("d") - SIZES IN INCHES*

**Sezione ESAGONALE (E) / HEXAGONAL section (E)**



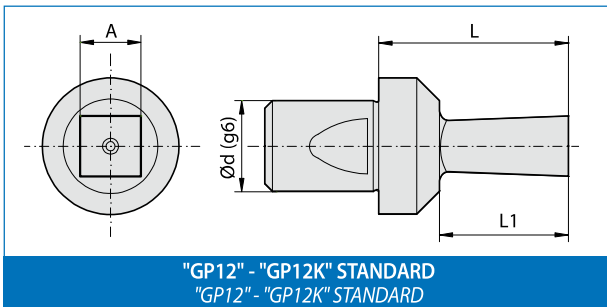
"GP12" - "GP12K" STANDARD  
 "GP12" - "GP12K" STANDARD



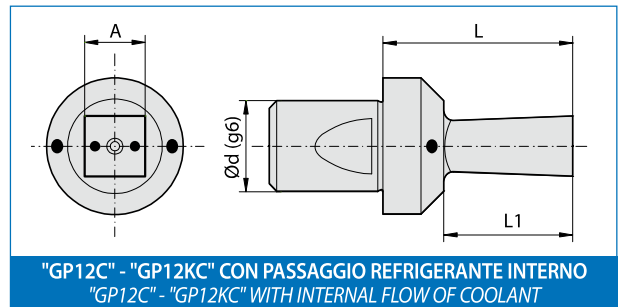
"GP12C" - "GP12KC" CON PASSAGGIO REFRIGERANTE INTERNO  
 "GP12C" - "GP12KC" WITH INTERNAL FLOW OF COOLANT

ARTICOLO (materiale) - ITEM (material)				DIMENSIONI - DIMENSIONS				Utilizzo su Broccatori/ Use on Broaching heads
HSS		SINTERIZZATO / SINTERED		d	A	L1	L	
Standard	Ref. / Cool.	Standard	Ref. / Cool.					
GP12-E-3/32"	GP12C-E-3/32"	GP12K-E-3/32"	GP12KC-E-3/32"	12	2,38 +0,06 +0,08	5	25	Standard BR-G12B BR-G12
GP12-E-1/8"	GP12C-E-1/8"	GP12K-E-1/8"	GP12KC-E-1/8"	12	3,17 +0,07 +0,09	6	25	
GP12-E-5/32"	GP12C-E-5/32"	GP12K-E-5/32"	GP12KC-E-5/32"	12	3,97 +0,08 +0,10	8	25	
GP12-E-3/16"	GP12C-E-3/16"	GP12K-E-3/16"	GP12KC-E-3/16"	12	4,76 +0,08 +0,10	9	25	
GP12-E-7/32"	GP12C-E-7/32"	GP12K-E-7/32"	GP12KC-E-7/32"	12	5,55 +0,08 +0,10	11	25	
GP12-E-1/4"	GP12C-E-1/4"	GP12K-E-1/4"	GP12KC-E-1/4"	12	6,35 +0,08 +0,10	13	25	
GP12-E-9/32"	GP12C-E-9/32"	GP12K-E-9/32"	GP12KC-E-9/32"	12	7,14 +0,09 +0,11	16	25	Refrig. / Cool. BRC-G12B BRC-G12
GP12-E-5/16"	GP12C-E-5/16"	GP12K-E-5/16"	GP12KC-E-5/16"	12	7,93 +0,09 +0,11	16	25	
GP12-E-3/8"	GP12C-E-3/8"	GP12K-E-3/8"	GP12KC-E-3/8"	12	9,52 +0,10 +0,12	18	25	
GP12-E-7/16"	GP12C-E-7/16"	GP12K-E-7/16"	GP12KC-E-7/16"	12	11,11 +0,11 +0,13	21	25	
GP12-E-1/2"	GP12C-E-1/2"	GP12K-E-1/2"	GP12KC-E-1/2"	12	12,70 +0,12 +0,14	21	25	
GP12-E-9/16"	GP12C-E-9/16"	GP12K-E-9/16"	GP12KC-E-9/16"	12	14,28 +0,12 +0,14	21	25	

**Sezione QUADRA (Q) / SQUARE section (Q)**



"GP12" - "GP12K" STANDARD  
 "GP12" - "GP12K" STANDARD



"GP12C" - "GP12KC" CON PASSAGGIO REFRIGERANTE INTERNO  
 "GP12C" - "GP12KC" WITH INTERNAL FLOW OF COOLANT

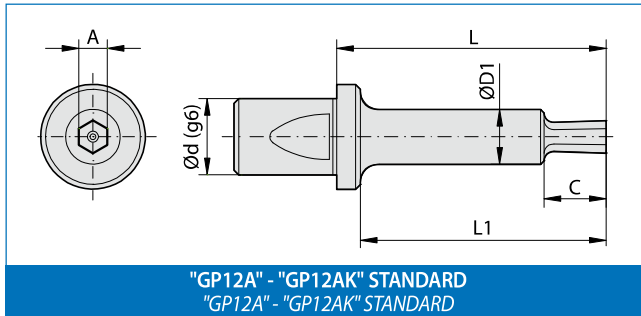
ARTICOLO (materiale) - ITEM (material)				DIMENSIONI - DIMENSIONS				Utilizzo su Broccatori/ Use on Broaching heads
HSS		SINTERIZZATO / SINTERED		d	A	L1	L	
Standard	Ref. / Cool.	Standard	Ref. / Cool.					
GP12-Q-3/32"	GP12C-Q-3/32"	GP12K-Q-3/32"	GP12KC-Q-3/32"	12	2,38 +0,06 +0,08	5	25	Standard BR-G12B BR-G12
GP12-Q-1/8"	GP12C-Q-1/8"	GP12K-Q-1/8"	GP12KC-Q-1/8"	12	3,17 +0,07 +0,09	6	25	
GP12-Q-5/32"	GP12C-Q-5/32"	GP12K-Q-5/32"	GP12KC-Q-5/32"	12	3,97 +0,08 +0,10	8	25	
GP12-Q-3/16"	GP12C-Q-3/16"	GP12K-Q-3/16"	GP12KC-Q-3/16"	12	4,76 +0,08 +0,10	9	25	
GP12-Q-7/32"	GP12C-Q-7/32"	GP12K-Q-7/32"	GP12KC-Q-7/32"	12	5,55 +0,08 +0,10	11	25	
GP12-Q-1/4"	GP12C-Q-1/4"	GP12K-Q-1/4"	GP12KC-Q-1/4"	12	6,35 +0,08 +0,10	15	25	
GP12-Q-9/32"	GP12C-Q-9/32"	GP12K-Q-9/32"	GP12KC-Q-9/32"	12	7,14 +0,09 +0,11	16	25	Refrig. / Cool. BRC-G12B BRC-G12
GP12-Q-5/16"	GP12C-Q-5/16"	GP12K-Q-5/16"	GP12KC-Q-5/16"	12	7,93 +0,09 +0,11	16	25	
GP12-Q-3/8"	GP12C-Q-3/8"	GP12K-Q-3/8"	GP12KC-Q-3/8"	12	9,52 +0,10 +0,12	18	25	
GP12-Q-7/16"	GP12C-Q-7/16"	GP12K-Q-7/16"	GP12KC-Q-7/16"	12	11,11 +0,11 +0,13	21	25	
GP12-Q-1/2"	GP12C-Q-1/2"	GP12K-Q-1/2"	GP12KC-Q-1/2"	12	12,70 +0,12 +0,14	21	25	

In questi articoli possiamo eseguire i seguenti rivestimenti: **HDP RED, WONDER, TiN, INOX PLUS e ZIRINOS** > vedi pag.16  
 Available coatings for the up above mentioned items: **HDP RED, WONDER, TiN, INOX PLUS and ZIRINOS** > see page 16



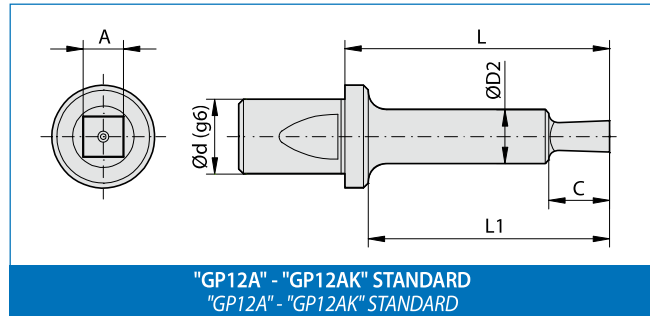
**BROCCHE GP12A - DIAMETRO "d" DEL GAMBO: 12 mm - MISURE IN POLLICI**  
**GP12A BROACHES - 12 mm SHANK DIAMETER ("d") - SIZES IN INCHES**

**Sezione ESAGONALE standard (E)**  
**Standard HEXAGONAL section (E)**



"GP12A" - "GP12AK" STANDARD  
 "GP12A" - "GP12AK" STANDARD

**Sezione QUADRA standard (Q)**  
**Standard SQUARE section (Q)**

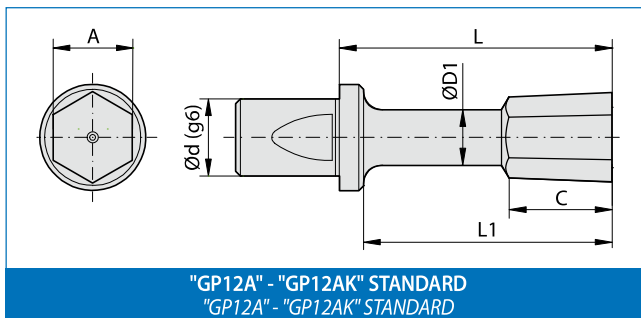


"GP12A" - "GP12AK" STANDARD  
 "GP12A" - "GP12AK" STANDARD

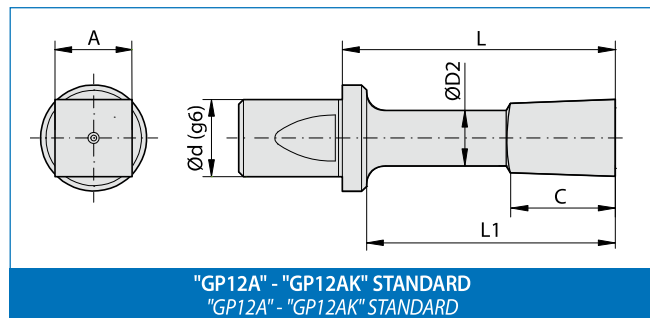
ESAGONALE / HEXAGONAL	
ARTICOLO (materiale) ITEM (material)	
HSS	SINTERIZZATO SINTERED
Standard	Standard
GP12A-E-1/8"	GP12AK-E-1/8"
GP12A-E-5/32"	GP12AK-E-5/32"
GP12A-E-3/16"	GP12AK-E-3/16"
GP12A-E-7/32"	GP12AK-E-7/32"
GP12A-E-1/4"	GP12AK-E-1/4"

QUADRA / SQUARE	
ARTICOLO (materiale) ITEM (material)	
HSS	SINTERIZZATO SINTERED
Standard	Standard
GP12A-Q-1/8"	GP12AK-Q-1/8"
GP12A-Q-5/32"	GP12AK-Q-5/32"
GP12A-Q-3/16"	GP12AK-Q-3/16"
GP12A-Q-7/32"	GP12AK-Q-7/32"
/	/

DIMENSIONI - DIMENSIONS								Utilizzo su Brocciatori/ Use on Broaching heads
d	A	L1	L	C	D1	D2		
12	3,17 +0,07 +0,09	55	60	15	10	10	Standard BR-G12A	
12	3,97 +0,08 +0,10	55	60	15	10	10		
12	4,76 +0,08 +0,10	55	60	15	10	10		
12	5,55 +0,08 +0,10	55	60	15	10	10		
12	6,35 +0,08 +0,10	55	60	15	10	/		



"GP12A" - "GP12AK" STANDARD  
 "GP12A" - "GP12AK" STANDARD



"GP12A" - "GP12AK" STANDARD  
 "GP12A" - "GP12AK" STANDARD

/	/
GP12A-E-9/32"	GP12AK-E-9/32"
GP12A-E-5/16"	GP12AK-E-5/16"
GP12A-E-3/8"	GP12AK-E-3/8"
GP12A-E-1/2"	GP12AK-E-1/2"

GP12A-Q-1/4"	GP12AK-Q-1/4"
GP12A-Q-9/32"	GP12AK-Q-9/32"
GP12A-Q-5/16"	GP12AK-Q-5/16"
GP12A-Q-3/8"	GP12AK-Q-3/8"
GP12A-Q-1/2"	GP12AK-Q-1/2"

12	6,35 +0,08 +0,10	55	60	19	/	6,7	Standard BR-G12A
12	7,14 +0,09 +0,11	55	60	19	6,7	7,7	
12	7,93 +0,09 +0,11	55	60	19	6,7	7,7	
12	9,52 +0,10 +0,12	55	60	19	7,7	11	
12	12,70 +0,12 +0,14	55	60	19	11	12	

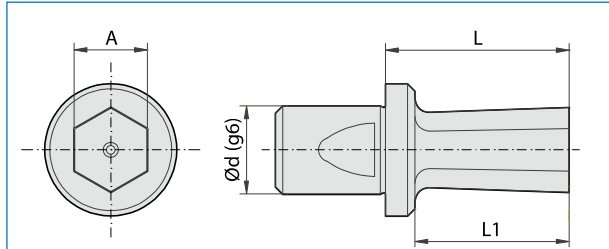
C = Profondità utile di brocciatura / C = Depth of the shape  
 L1 = Profondità max. di lavoro / L1 = Maximum broaching depth

In questi articoli possiamo eseguire i seguenti rivestimenti: HDP RED, WONDER, TiN, INOX PLUS e ZIRINOS > vedi pag.16  
 Available coatings for the up above mentioned items: HDP RED, WONDER, TiN, INOX PLUS and ZIRINOS > see page 16



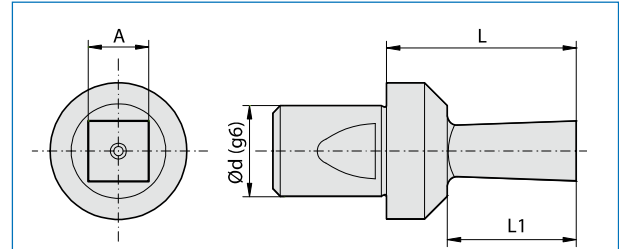
**BROCCE GP16 - DIAMETRO "d" DEL GAMBO: 16 mm - MISURE IN POLLICI**  
*GP16 BROACHES - 16 mm SHANK DIAMETER ("d") - SIZES IN INCHES*

**Sezione ESAGONALE standard (E)**  
*Standard HEXAGONAL section (E)*



"GP16" - "GP16K" STANDARD  
 "GP16" - "GP16K" STANDARD

**Sezione QUADRA standard (Q)**  
*Standard SQUARE section (Q)*



"GP16" - "GP16K" STANDARD  
 "GP16" - "GP16K" STANDARD

ESAGONALE / HEXAGONAL	
ARTICOLO (materiale) ITEM (material)	
HSS	SINTERIZZATO SINTERED
Standard	Standard
GP16-E-3/32"	GP16K-E-3/32"
GP16-E-1/8"	GP16K-E-1/8"
GP16-E-5/32"	GP16K-E-5/32"
GP16-E-3/16"	GP16K-E-3/16"
GP16-E-7/32"	GP16K-E-7/32"
GP16-E-1/4"	GP16K-E-1/4"
GP16-E-9/32"	GP16K-E-9/32"
GP16-E-5/16"	GP16K-E-5/16"
GP16-E-3/8"	GP16K-E-3/8"
GP16-E-7/16"	GP16K-E-7/16"
GP16-E-1/2"	GP16K-E-1/2"
GP16-E-9/16"	GP16K-E-9/16"
GP16-E-5/8"	GP16K-E-5/8"
GP16-E-3/4"	GP16K-E-3/4"
GP16-E-7/8"	GP16K-E-7/8"
GP16-E-1"	GP16K-E-1"

QUADRA / SQUARE	
ARTICOLO (materiale) ITEM (material)	
HSS	SINTERIZZATO SINTERED
Standard	Standard
GP16-Q-3/32"	GP16K-Q-3/32"
GP16-Q-1/8"	GP16K-Q-1/8"
GP16-Q-5/32"	GP16K-Q-5/32"
GP16-Q-3/16"	GP16K-Q-3/16"
GP16-Q-7/32"	GP16K-Q-7/32"
GP16-Q-1/4"	GP16K-Q-1/4"
GP16-Q-9/32"	GP16K-Q-9/32"
GP16-Q-5/16"	GP16K-Q-5/16"
GP16-Q-3/8"	GP16K-Q-3/8"
GP16-Q-7/16"	GP16K-Q-7/16"
GP16-Q-1/2"	GP16K-Q-1/2"
GP16-Q-9/16"	GP16K-Q-9/16"
GP16-Q-5/8"	GP16K-Q-5/8"
/	/

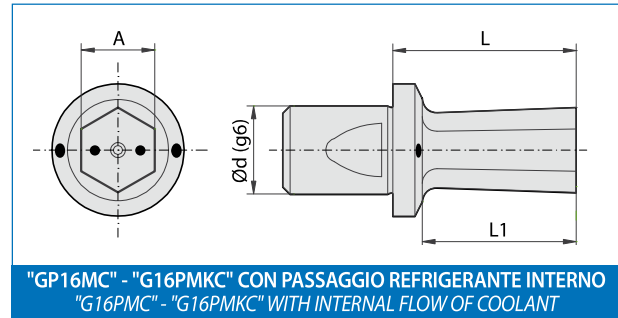
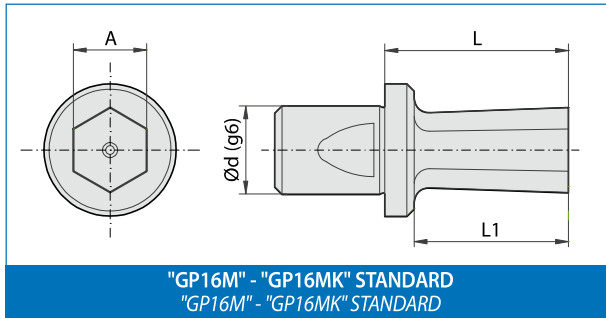
DIMENSIONI - DIMENSIONS				Utilizzo su Brocciatori/ Use on Broaching heads
d	A	L1	L	
16	2,38 +0,06 +0,08	5	25	Standard BR-G16
16	3,17 +0,07 +0,09	6	25	
16	3,97 +0,08 +0,10	8	25	
16	4,76 +0,08 +0,10	9	25	
16	5,55 +0,08 +0,10	11	25	
16	6,35 +0,08 +0,10	15	25	
16	7,14 +0,09 +0,11	16	25	
16	7,93 +0,09 +0,11	16	25	
16	9,52 +0,10 +0,12	18	25	
16	11,11 +0,11 +0,13	21	25	
16	12,70 +0,12 +0,14	21	25	
16	14,28 +0,12 +0,14	21	25	
16	15,87 +0,13 +0,15	21	25	
16	19,05 +0,17 +0,19	21	25	
16	22,22 +0,21 +0,23	21	25	
16	25,40 +0,22 +0,24	21	25	

In questi articoli possiamo eseguire i seguenti rivestimenti: **HDP RED, WONDER, TiN, INOX PLUS e ZIRINOS** > vedi pag.16  
 Available coatings for the up above mentioned items: **HDP RED, WONDER, TiN, INOX PLUS and ZIRINOS** > see page 16



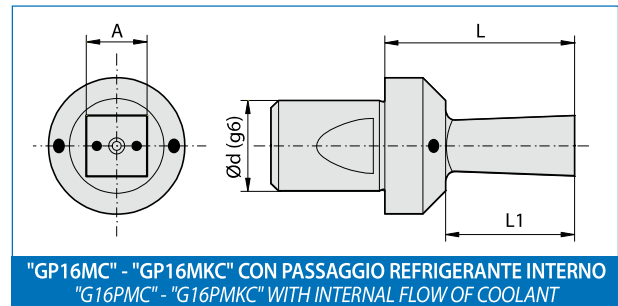
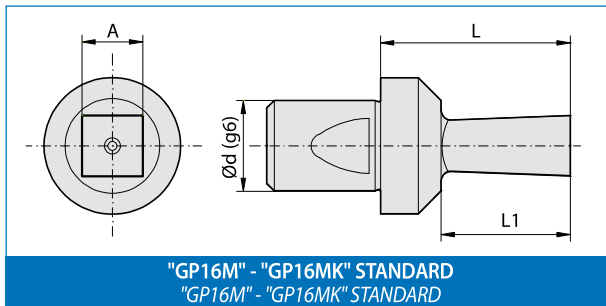
## BROCCE GP16M E GP16MC - DIAMETRO "d" DEL GAMBO: 16 mm - MISURE IN POLLICI GP16M AND GP16MC BROACHES - 16 mm SHANK DIAMETER ("d") - SIZES IN INCHES

### Sezione ESAGONALE (E) / HEXAGONAL section (E)



ARTICOLO (materiale) - ITEM (material)				DIMENSIONI - DIMENSIONS				Utilizzo su Brocciatori / Use on Broaching heads
HSS		SINTERIZZATO / SINTERED		d	A	L1	L	
Standard	Ref. / Cool.	Standard	Ref. / Cool.					
GP16M-E-1/4"	GP16MC-E-1/4"	GP16MK-E-1/4"	GP16MKC-E-1/4"	16	6,35 +0,08 +0,10	15	35	Standard <b>BR-G16M</b>
GP16M-E-9/32"	GP16MC-E-9/32"	GP16MK-E-9/32"	GP16MKC-E-9/32"	16	7,14 +0,09 +0,11	16	35	
GP16M-E-5/16"	GP16MC-E-5/16"	GP16MK-E-5/16"	GP16MKC-E-5/16"	16	7,93 +0,09 +0,11	16	35	
GP16M-E-3/8"	GP16MC-E-3/8"	GP16MK-E-3/8"	GP16MKC-E-3/8"	16	9,52 +0,10 +0,12	18	35	
GP16M-E-7/16"	GP16MC-E-7/16"	GP16MK-E-7/16"	GP16MKC-E-7/16"	16	11,11 +0,11 +0,13	31	35	
GP16M-E-1/2"	GP16MC-E-1/2"	GP16MK-E-1/2"	GP16MKC-E-1/2"	16	12,70 +0,12 +0,14	31	35	Refrig. / Cool. <b>BRC-G16M</b>
GP16M-E-9/16"	GP16MC-E-9/16"	GP16MK-E-9/16"	GP16MKC-E-9/16"	16	14,28 +0,12 +0,14	31	35	
GP16M-E-5/8"	GP16MC-E-5/8"	GP16MK-E-5/8"	GP16MKC-E-5/8"	16	15,87 +0,13 +0,15	31	35	
GP16M-E-3/4"	GP16MC-E-3/4"	GP16MK-E-3/4"	GP16MKC-E-3/4"	16	19,05 +0,17 +0,19	31	35	
GP16M-E-7/8"	GP16MC-E-7/8"	GP16MK-E-7/8"	GP16MKC-E-7/8"	16	22,22 +0,21 +0,23	31	35	
GP16M-E-1"	GP16MC-E-1"	GP16MK-E-1"	GP16MKC-E-1"	16	25,40 +0,22 +0,24	31	35	

### Sezione QUADRA (Q) / SQUARE section (Q)



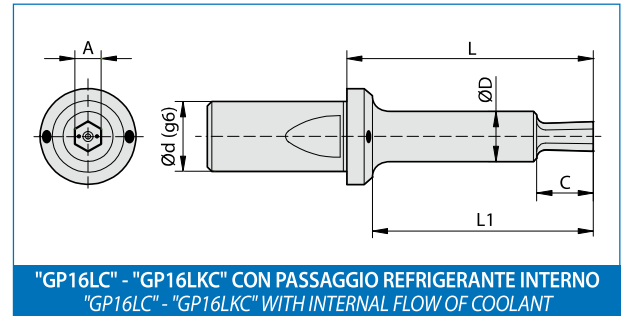
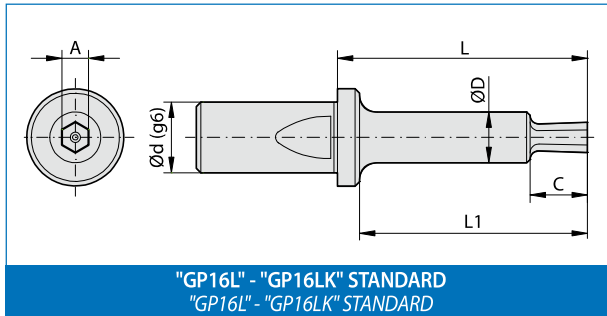
ARTICOLO (materiale) - ITEM (material)				DIMENSIONI - DIMENSIONS				Utilizzo su Brocciatori / Use on Broaching heads
HSS		SINTERIZZATO / SINTERED		d	A	L1	L	
Standard	Ref. / Cool.	Standard	Ref. / Cool.					
GP16M-Q-1/4"	GP16MC-Q-1/4"	GP16MK-Q-1/4"	GP16MKC-Q-1/4"	16	6,35 +0,08 +0,10	15	35	Standard <b>BR-G16M</b>
GP16M-Q-9/32"	GP16MC-Q-9/32"	GP16MK-Q-9/32"	GP16MKC-Q-9/32"	16	7,14 +0,09 +0,11	16	35	
GP16M-Q-5/16"	GP16MC-Q-5/16"	GP16MK-Q-5/16"	GP16MKC-Q-5/16"	16	7,93 +0,09 +0,11	16	35	
GP16M-Q-3/8"	GP16MC-Q-3/8"	GP16MK-Q-3/8"	GP16MKC-Q-3/8"	16	9,52 +0,10 +0,12	18	35	
GP16M-Q-7/16"	GP16MC-Q-7/16"	GP16MK-Q-7/16"	GP16MKC-Q-7/16"	16	11,11 +0,11 +0,13	31	35	
GP16M-Q-1/2"	GP16MC-Q-1/2"	GP16MK-Q-1/2"	GP16MKC-Q-1/2"	16	12,70 +0,12 +0,14	31	35	Refrig. / Cool. <b>BRC-G16M</b>
GP16M-Q-9/16"	GP16MC-Q-9/16"	GP16MK-Q-9/16"	GP16MKC-Q-9/16"	16	14,28 +0,12 +0,14	31	35	
GP16M-Q-5/8"	GP16MC-Q-5/8"	GP16MK-Q-5/8"	GP16MKC-Q-5/8"	16	15,87 +0,13 +0,15	31	35	
GP16M-Q-3/4"	GP16MC-Q-3/4"	GP16MK-Q-3/4"	GP16MKC-Q-3/4"	16	19,05 +0,17 +0,19	31	35	

In questi articoli possiamo eseguire i seguenti rivestimenti: **HDP RED, WONDER, TiN, INOX PLUS e ZIRINOS** > vedi pag.16  
Available coatings for the up above mentioned items: **HDP RED, WONDER, TiN, INOX PLUS and ZIRINOS** > see page 16

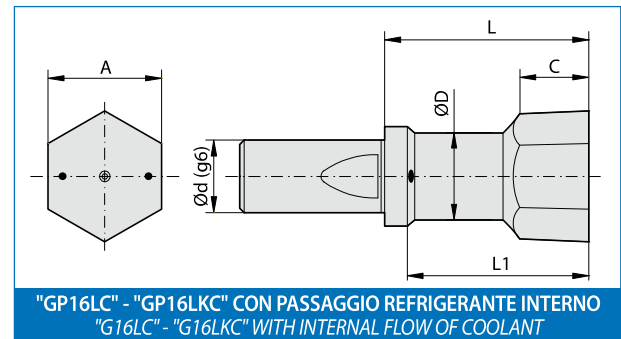
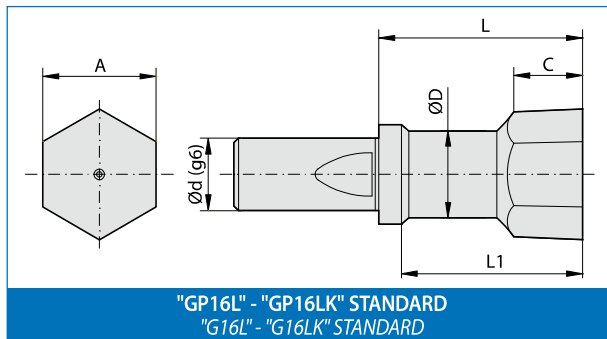


**BROCCHE GP16L E GP16LC - DIAMETRO "d" DEL GAMBO: 16 mm - MISURE IN POLLICI**  
**GP16L AND GP16LC BROACHES - 16 mm SHANK DIAMETER ("d") - SIZES IN INCHES**

**Sezione ESAGONALE (E)**  
**HEXAGONAL section (E)**



ARTICOLO (materiale) - ITEM (material)				DIMENSIONI - DIMENSIONS						Utilizzo su Brocciatori/ Use on Broaching heads
HSS		SINTERIZZATO / SINTERED		d	A	L1	L	C	D	
Standard	Ref. / Cool.	Standard	Ref. / Cool.							Standard BR-G16L Refrig. / Cool. BRC-G16L
GP16L-E-1/4"	GP16LC-E-1/4"	GP16LK-E-1/4"	GP16LKC-E-1/4"	16	6,35 +0,08 +0,10	40	45	13	9	
GP16L-E-9/32"	GP16LC-E-9/32"	GP16LK-E-9/32"	GP16LKC-E-9/32"	16	7,14 +0,09 +0,11	40	45	15	9	
GP16L-E-5/16"	GP16LC-E-5/16"	GP16LK-E-5/16"	GP16LKC-E-5/16"	16	7,93 +0,09 +0,11	40	45	16	9	
GP16L-E-3/8"	GP16LC-E-3/8"	GP16LK-E-3/8"	GP16LKC-E-3/8"	16	9,52 +0,10 +0,12	40	45	17	9	



GP16L-E-7/16"	GP16LC-E-7/16"	GP16LK-E-7/16"	GP16LKC-E-7/16"	16	11,11 +0,11 +0,13	40	45	17	9	Standard BR-G16L Refrig. / Cool. BRC-G16L
GP16L-E-1/2"	GP16LC-E-1/2"	GP16LK-E-1/2"	GP16LKC-E-1/2"	16	12,70 +0,12 +0,14	40	45	17	10,5	
GP16L-E-9/16"	GP16LC-E-9/16"	GP16LK-E-9/16"	GP16LKC-E-9/16"	16	14,28 +0,12 +0,14	40	45	17	12,5	
GP16L-E-5/8"	GP16LC-E-5/8"	GP16LK-E-5/8"	GP16LKC-E-5/8"	16	15,87 +0,13 +0,15	40	45	17	13,5	
GP16L-E-3/4"	GP16LC-E-3/4"	GP16LK-E-3/4"	GP16LKC-E-3/4"	16	19,05 +0,17 +0,19	40	45	17	16,5	
GP16L-E-7/8"	GP16LC-E-7/8"	GP16LK-E-7/8"	GP16LKC-E-7/8"	16	22,22 +0,21 +0,23	40	45	17	19,5	
GP16L-E-1"	GP16LC-E-1"	GP16LK-E-1"	GP16LKC-E-1"	16	25,40 +0,22 +0,24	40	45	17	21,5	

C = Profondità utile di brocciatura - L1 = Profondità max. di lavoro / C = Depth of the shape - L1 = Maximum broaching depth

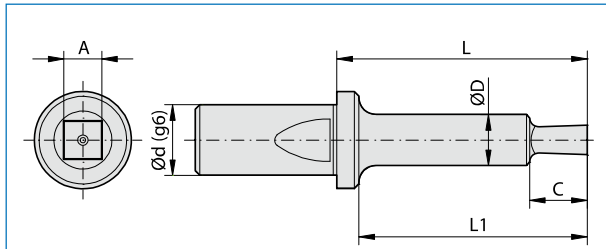
In questi articoli possiamo eseguire i seguenti rivestimenti: **HDP RED, WONDER, TiN, INOX PLUS e ZIRINOS** > vedi pag.16  
 Available coatings for the up above mentioned items: **HDP RED, WONDER, TiN, INOX PLUS and ZIRINOS** > see page 16



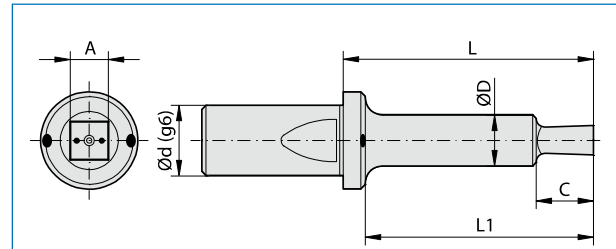
## BROCCHE GP16L E GP16LC - DIAMETRO "d" DEL GAMBO: 16 mm - MISURE IN POLLICI

*GP16L AND GP16LC BROACHES - 16 mm SHANK DIAMETER ("d") - SIZES IN INCHES*

### Sezione QUADRA (Q) SQUARE section (Q)

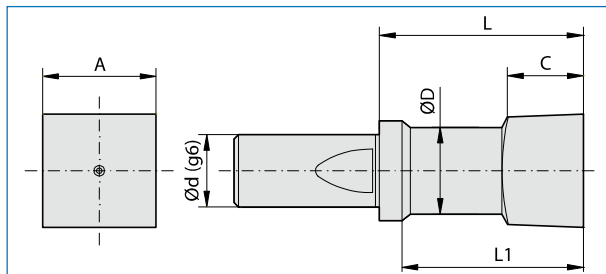


**"GP16L" - "GP16LK" STANDARD**  
*"GP16L" - "GP16LK" STANDARD*

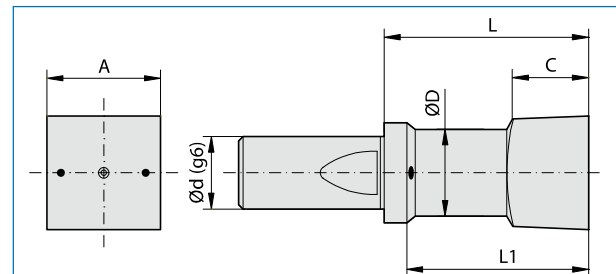


**"GP16LC" - "GP16LKC" CON PASSAGGIO REFRIGERANTE INTERNO**  
*"GP16LC" - "GP16LKC" WITH INTERNAL FLOW OF COOLANT*

ARTICOLO (materiale) - ITEM (material)				DIMENSIONI - DIMENSIONS						Utilizzo su Broccatori / Use on Broaching heads
HSS		SINTERIZZATO / SINTERED		d	A	L1	L	C	D	
Standard <input type="checkbox"/>	Ref. / Cool. <input type="checkbox"/>	Standard <input type="checkbox"/>	Ref. / Cool. <input type="checkbox"/>							Standard BR-G16L Refrig. / Cool. BRC-G16L
GP16L-Q-1/4"	GP16LC-Q-1/4"	GP16LK-Q-1/4"	GP16LKC-Q-1/4"	16	6,35 +0,08 +0,10	40	45	13	9	
GP16L-Q-9/32"	GP16LC-Q-9/32"	GP16LK-Q-9/32"	GP16LKC-Q-9/32"	16	7,14 +0,09 +0,11	40	45	15	9	
GP16L-Q-5/16"	GP16LC-Q-5/16"	GP16LK-Q-5/16"	GP16LKC-Q-5/16"	16	7,93 +0,09 +0,11	40	45	16	9	
GP16L-Q-3/8"	GP16LC-Q-3/8"	GP16LK-Q-3/8"	GP16LKC-Q-3/8"	16	9,52 +0,10 +0,12	40	45	17	9	



**"GP16L" - "GP16LK" STANDARD**  
*"G16L" - "G16LK" STANDARD*



**"GP16LC" - "GP16LKC" CON PASSAGGIO REFRIGERANTE INTERNO**  
*"G16LC" - "G16LKC" WITH INTERNAL FLOW OF COOLANT*

GP16L-Q-7/16"	GP16LC-Q-7/16"	GP16LK-Q-7/16"	GP16LKC-Q-7/16"	16	11,11 +0,11 +0,13	40	45	17	9	Standard BR-G16L
GP16L-Q-1/2"	GP16LC-Q-1/2"	GP16LK-Q-1/2"	GP16LKC-Q-1/2"	16	12,70 +0,12 +0,14	40	45	17	10,5	
GP16L-Q-9/16"	GP16LC-Q-9/16"	GP16LK-Q-9/16"	GP16LKC-Q-9/16"	16	14,28 +0,12 +0,14	40	45	17	12,5	
GP16L-Q-5/8"	GP16LC-Q-5/8"	GP16LK-Q-5/8"	GP16LKC-Q-5/8"	16	15,87 +0,13 +0,15	40	45	17	13,5	
GP16L-Q-3/4"	GP16LC-Q-3/4"	GP16LK-Q-3/4"	GP16LKC-Q-3/4"	16	19,05 +0,17 +0,19	40	45	17	16,5	Refrig. / Cool. BRC-G16L
GP16L-Q-7/8"	GP16LC-Q-7/8"	GP16LK-Q-7/8"	GP16LKC-Q-7/8"	16	22,22 +0,21 +0,23	40	45	17	19,5	
GP16L-Q-1"	GP16LC-Q-1"	GP16LK-Q-1"	GP16LKC-Q-1"	16	25,40 +0,22 +0,24	40	45	17	21,5	

C = Profondità utile di brocciatura - L1 = Profondità max. di lavoro / C = Depth of the shape - L1 = Maximum broaching depth

In questi articoli possiamo eseguire i seguenti rivestimenti: **HDP RED, WONDER, TiN, INOX PLUS e ZIRINOS** > vedi pag.16  
Available coatings for the up above mentioned items: **HDP RED, WONDER, TiN, INOX PLUS and ZIRINOS** > see page 16

